




ASCOLIA
VISION OF EXCELLENCE

HOUSEKEEPING

ROOM SERVICE

LOBBY

IN ROOM

BATHROOM

www.ascolia.com



We invest our energy in searching innovative solutions by thinking differently.

The existing is challenged by designing ergonomic, user friendly and ecological equipment.

Our main goal is to produce fantastic hospitality products.

Be our guest and share our passion!

DID YOU KNOW?

Light as air, fluttering with ease, harmonious and efficient, a necessity to its environment, the Ascolia is a butterfly that originates from South America.

What a wonderful source of inspiration for our designers ...

This catalogue has been carefully compiled, just like each Ascolia product. The Ascolia Team wishes you a pleasant read.

At your service,
The Ascolia Team

333

326 - 331 ▶
◀ 333 - 345



TABLE OF CONTENTS

OUR COMMITMENTS 5

MATERIALS AND CHARACTERISTICS 9

HOUSEKEEPING 11

12 **Traditional range**

Atlas 520-650-800-1000-1200
Motorisation Atlas
Satellites
- Callisto
- Hermia
Vega

29 **Exclusive range “La malle”**

Gulliver 650-800
Despina 650-800
Cortes
Satellite
- Magellan

42 **Small corridors range**

Pluton 520-650
Minos 125-300

46 **Housekeeping complements**

Daphnis
Vesta

48 **Bag holders**

Protea Mono-Duo-Trio-Quattro
Mars

54 **Transport, storage and distribution of clean linen**

Antarès
Metis

56 **Collection of soiled linen**

Missouri
Messipi
Sirius

58 **Container trolleys**

Leda

59 **Maintenance**

Lavezzi

ROOM SERVICE 61

62 Minibar restocking
Traditional range
Balaton 520-800

Exclusive range "La malle"
Lugano 650-800

Motorisation

66 Room service table
Lagoon
Solar

68 Rolling tables
Michigan
Baringo

70 Racking trolleys
Aral
Baikal
Victoria

LOBBY 75

76 Luggage trolleys
Everest
Motorisation
Fuji
Vesuvio
Stromboli
Ubinas

86 Guidance
Luxor
Crown
Abydos
Dikos

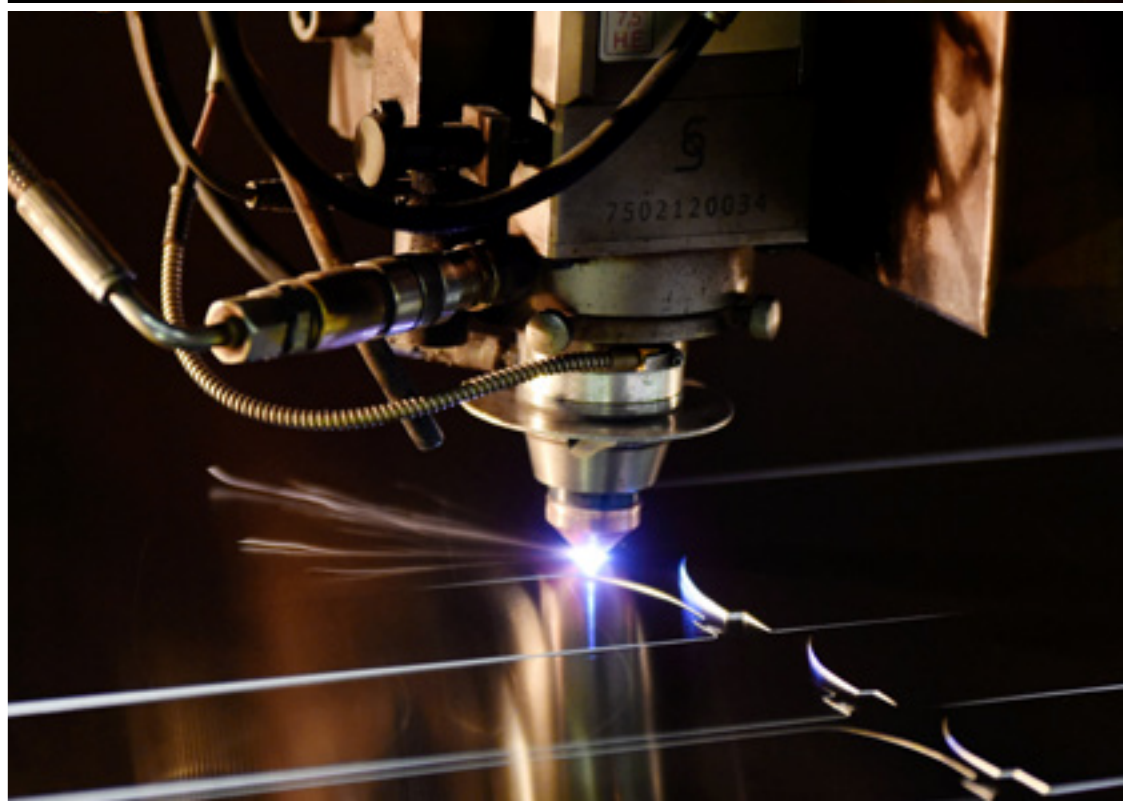
92 Shoe Shine Machine
Easy comfort
Cosmo
Cosmo Plus
Ronda 30 Standard
Elipse

EQUIPMENT

94 In-room equipment
Tea & coffee facilities
Nespresso machines
Alarm Clock
Ironing centre
Luggage rack
Stationary - Nevada
Bins

112 Bathroom equipment
Pedal bins
Weighing scales
Hairdryers
Magnifying mirrors
Bathroom Accessories





OUR COMMITMENTS

1 TO LISTEN

Ascolia wishes to be available for you and proposes solutions that correspond to your needs and processes.

2 INNOVATION AND FLEXIBILITY

Ascolia uses modern materials and technologies and is constantly searching ways to improve manoeuvrability, ergonomics and functionality.
With every creation we challenge the existing by thinking differently. We strive to improve your daily tasks with functional and ergonomic solutions. Please be our guest!

3 DESIGN AND ERGONOMICS

The design of your establishment is the result of a careful study with each detail having received particular attention.
Mobile furniture, often seen by your customers, must be in perfect harmony with its surroundings.
Pure and sober lines are the visible witnesses of this.
The user will appreciate the comfort and manoeuvrability.

4 COLLABORATION

We believe in the power of our team, where everybody takes an active role in the success of the finished project.



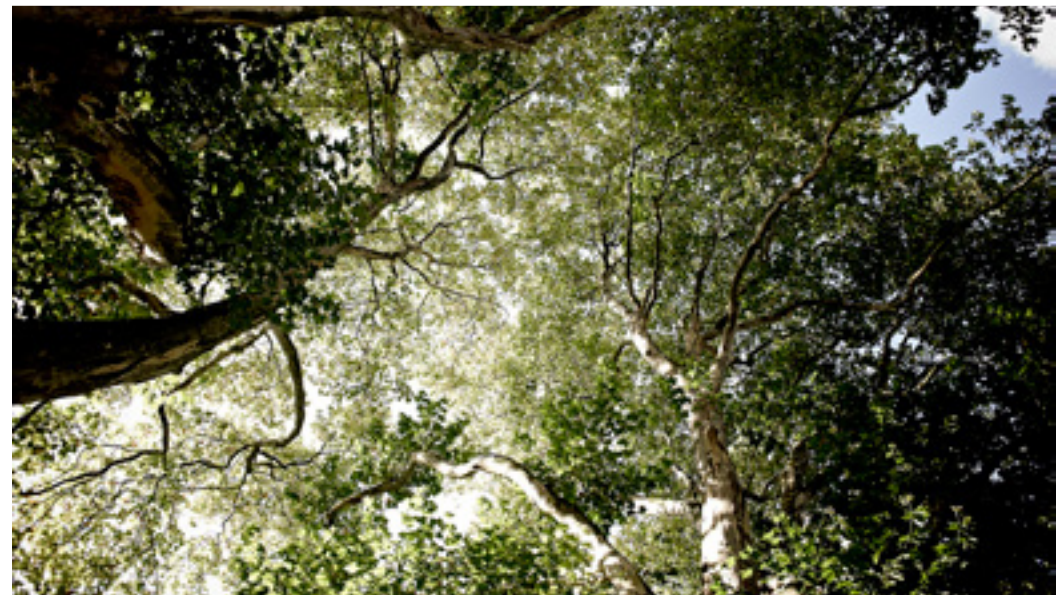
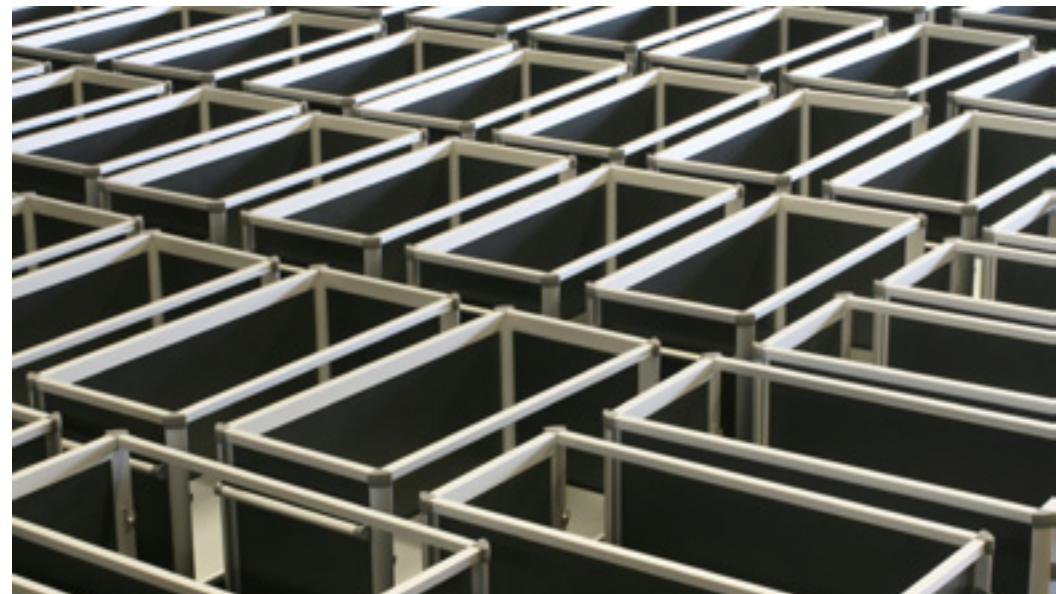
OUR COMMITMENTS

5 COMPETENCES AND QUALITY

All of our products are assembled and controlled in our factories before expedition.
The affixing of our label at the end of the production line is a warrant of quality.
Ascolia is based on almost a century's worth of traditional quality and know-how.
Its team members are proud to export their products to over 80 countries.

6 DURABILITY

The constituent components of our furniture are carefully selected, and their manufacturing is respectful of the environment. They are all recyclable.





7 NETWORK

Ascolia is present in Belgium, France, Spain and Asia but is also represented by a widespread network of agents located in many European and around the world.



MATERIALS AND CHARACTERISTICS

1 STRUCTURE IN ANODISED ALUMINIUM

Aluminium is a noble, light and resistant material. Anodising it gives it an excellent resistance to scratches, chemical agents and saline corrosion. It is used in particular in the food industry and aeronautics.
Aluminium is 3 times lighter than steel and is indefinitely recyclable.

2 COMPACT PANEL PARTITION WALLS

These finishing panels offer a multitude of choices when it comes to color and very life-like wood aspects. They resist to shocks, scratches, humidity and are very light.

3 WHEELS

Better Mobility. Better Life.

As essential elements to your comfort, the wheels used are of high quality. They are equipped with precision ball bearings that optimise the manoeuvrability. The tyre of the wheel is adapted to the type of floor in your establishment.

4 MAINTENANCE

The materials chosen are selected to guarantee an easy maintenance and to be resistant to mainstream detergents.
The perfectly round angles and the absence of sharp edges facilitate and diminish maintenance.





HOUSEKEEPING

You require a room service that is discrete, tidy and efficient.

By listening to your needs, Ascolia has developed a functional, easy to handle and ergonomic range of housekeeping trolleys.

A very wide range to cater for all your needs.

Multiple storage options, optimisation of space, quality of the finish, each detail has been the subject of careful study focusing on the comfort of the user.

TRADITIONAL RANGE

Atlas

520-650-800-1000

Housekeeping trolley

Matching user friendliness with aesthetics: the Atlas

Capacity: 4 to 10 rooms

Standard equipment:

- 4 models; Atlas 520, 650, 800 and 1000
- Anodised aluminium frame
- 1 open compartment for amenities
- 3 levels for ranging clean linen
- 1 horizontal steering handle
- Grey wrap-around non-marking bumper

Wheels

- Atlas 520 and 650 – 4 swiveling wheels Ø125mm with non-marking thermoplastic layer
- Atlas 800 – 2 fixed and 2 swiveling wheels Ø160mm with non-marking polyamide layer
- Atlas 1000 – 4 swiveling wheels Ø160mm with non-marking polyamide layer combined with a 5th steering wheel
- A choice amongst different finishes (light grey, wenge oak look, black caviar look, almond look)

Options

- Several different options are available; please see pages 18 and 19





Atlas

THE GREAT CLASSICS



Atlas 520

Capacity: 4 to 5 rooms

Finish: Light grey
Options: Linen bag holder, garbage bag holder, 2 foldable bases, stationery drawer



Atlas 650

Capacity: 5 to 6 rooms

Finish: Almond look
Options: Linen bag holder, garbage bag holder, 2 foldable bases (in folded position), doors, amenities drawer, stationery drawer



Atlas 800

Capacity: 7 to 8 rooms

Finish: Wenge oak look
Options: Linen bag holder and foldable base



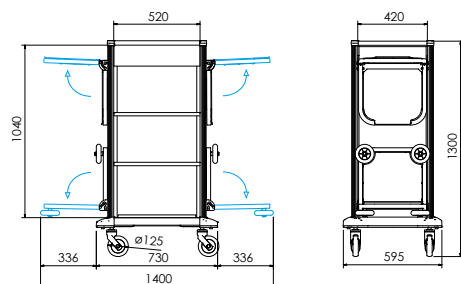
Atlas 1000

Capacity: 9 to 10 rooms

Finish: Black caviar look
Options: Linen bag holder, garbage bag holder, 2 foldable bases, doors, amenities drawer, stationery drawer

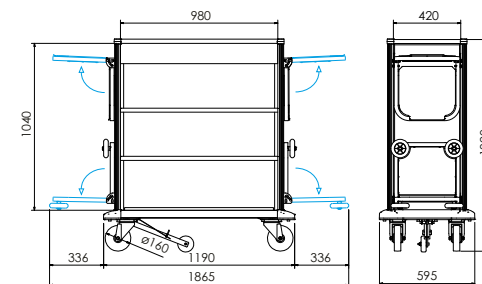
MODELS AND REFERENCES

*The last 2 digits refer to the finishes



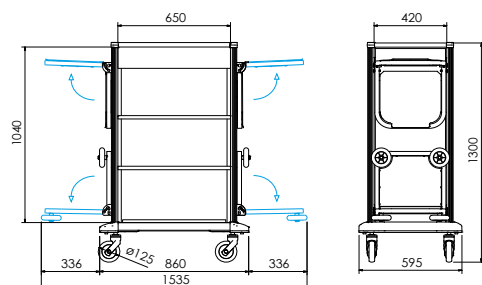
ATLAS 520

Overall dimensions				Reference *
Width (mm)	Depth (mm)	Height (mm)	Wheels Ø (mm)	Base Model
730	595	1300	125	101212xx
Inside dimensions				
Width (mm)	Depth (mm)			
520	420			



ATLAS 1000

Overall dimensions				Reference *
Width (mm)	Depth (mm)	Height (mm)	Wheels Ø (mm)	Base Model
1190	595	1320	160	101215xx
Inside dimensions				
Width (mm)	Depth (mm)			
980	420			

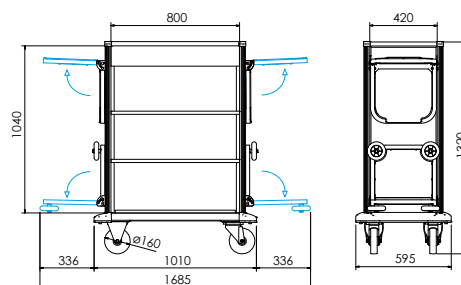


ATLAS 650

Overall dimensions				Reference *
Width (mm)	Depth (mm)	Height (mm)	Wheels Ø (mm)	Base Model
860	595	1300	125	101213xx
Inside dimensions				
Width (mm)	Depth (mm)			
650	420			

ATLAS 800

Overall dimensions				Reference *
Width (mm)	Depth (mm)	Height (mm)	Wheels Ø (mm)	Base Model
1010	595	1320	160	101214xx
Inside dimensions				
Width (mm)	Depth (mm)			
800	420			



CONFIGURATION EXAMPLES

(LINEN AND GARBAGE BAG HOLDERS AVAILABLE ON ALL MODELS)



1 Basic model



2 Stationery drawer



3 Amenities drawer



4 Amenities and stationery drawer



5 Amenities compartment lid



6 Amenities compartment lid and stationery drawer



7 Doors



8 Stationery drawer and doors



9 Amenities drawer and doors



10 Amenities drawer, stationery drawer and doors



11 Amenities compartment lid and doors



12 Amenities compartment lid, stationery drawer and doors

OPTIONS

ATLAS 520 - 650 - 800 - 1000



Waste bag holder mono and foldable base



Waste bag holder duplo (selective waste sorting) and foldable base



Waste bag curtain



Linen bag holder and foldable base



Foldable base in combination with a bag holder



Linear dividers for amenities compartment/drawer



Lid for amenities compartment with or without lock



Lateral boxes for various uses



Mop holder and hook



Additional horizontal steering handle



Extra protection via additional swiveling corner pads



5th steering wheel (Atlas 800 only)



Amenities drawer



Stationery drawer
including linear dividers



Doors with or without lock
(opening up to 270°)



Coupling with satellite
Callisto or Hermia

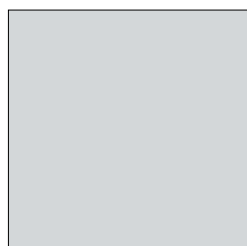


Stackable water tight box
for tableware

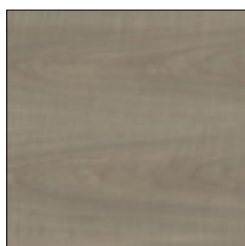


15 or 30l lateral container
(bacbis)

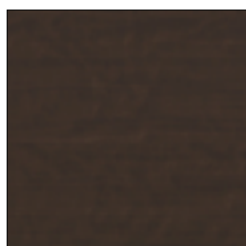
FINISHES



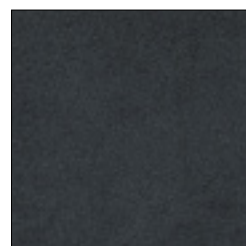
Light grey
Ref xx=09



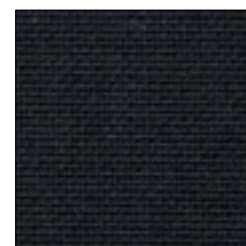
Almond look
Ref xx=17



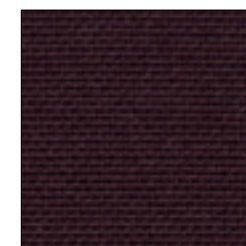
Wenge oak look
Ref xx=11



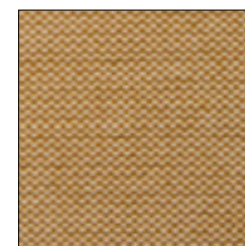
Black caviar look
Ref xx=14



Dark blue



Burgundy



Sand

LINEN BAG AND GARBAGE BAG CURTAIN COLORS

TRADITIONAL RANGE

Atlas 1200

Housekeeping trolley

Optimised organisation: one place for each item, each item its place!

Capacity: 8 to 10 rooms

Standard equipment:

- Anodised aluminium frame
- 4 levels for ranging clean linen
- Other ranging possibilities :
 - 4 drawers for amenities, courtesy trays, stationery, ... (height 120mm)
 - 2 drawers for divers products, chemicals, tableware, ... (height 170mm)
 - 4 stationery openings at the top
 - 1 horizontal steering handle
 - Grey wrap-around non-marking bumper
 - 4 swiveling wheels Ø160mm with non-marking polyamide layer combined with a 5th steering wheel
 - A choice amongst different finishes (wenge oak look, black caviar look, almond look)

Options

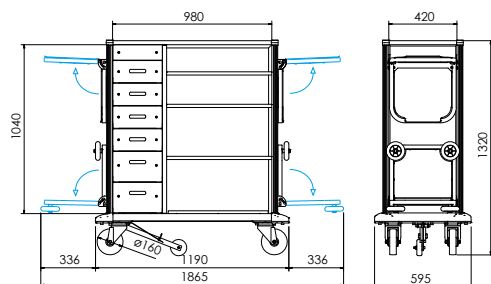
- Several different options are available, please see page 22





REFERENCES AND OPTIONS

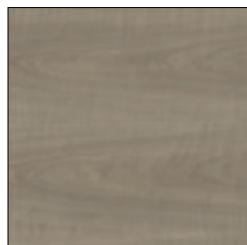
Atlas 1200



ATLAS 1200

Overall dimensions				Reference *
Width (mm)	Depth (mm)	Height (mm)	Wheels Ø (mm)	Base Model
1190	595	1320	160	101212xx
Inside dimensions				
Width (mm)	Depth (mm)			
980/650	420			

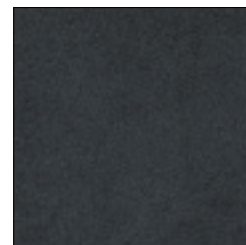
FINISHES



Almond look
Ref xx=17



Wenge oak look
Ref xx=11

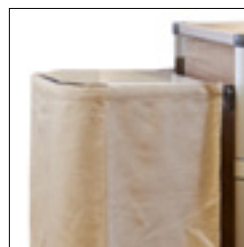


Black caviar look
Ref xx=14

OPTIONS



Waste bag holder mono or duplo (selective waste sorting) and foldable base



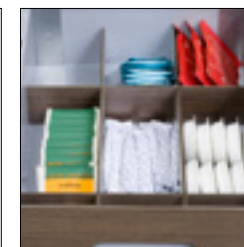
Waste bag curtain



Linen bag holder and foldable base



Mop holder and hook



Partitioning for drawers



The ergonomic controller allows you an easy and intuitive use



Characteristics

- Ergonomic controller allows you an easy and intuitive use
- Progressive and silent acceleration
- Safety of use
- Great manoeuvrability; pivots on the spot
- Autonomy; 3 working days
- Charging time; 7 hours
- CE certification

Technical specifications

- Power ; 240 W
- Maximum forward speed : 5 km/h
- Maximum reverse speed : 3 km/h
- Batteries AGM 12V

SATELLITES ATLAS

Hermia

Collection of soiled linen and/or garbage

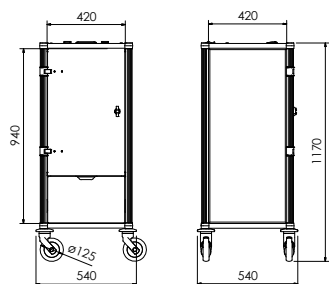
Used separately or coupled with Atlas

Standard equipment

- Anodised aluminium frame
- Compartment for soiled linen with door and lid including a 100l bag
- A 20l drawer for chemicals, garbage, ...
- 4 swiveling wheels Ø125mm with non-marking thermoplastic layer
- 4 swiveling corner pads for protection
- A choice amongst different finishes (light grey, wenge oak look, black caviar look, almond look)

Options

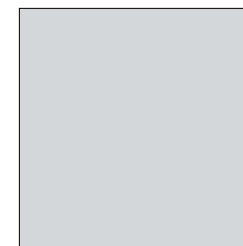
- Coupling hook with Atlas



Width (mm)	Depth (mm)	Height (mm)	Wheels Ø (mm)	Base Model
540	540	1170	125	101501xx



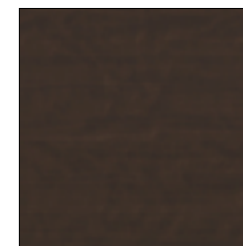
FINISHES



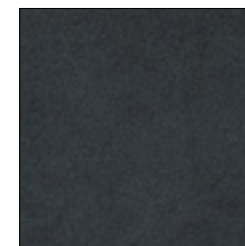
Light grey
Ref xx=09



Almond look
Ref xx=17



Wenge oak look
Ref xx=11



Black caviar look
Ref xx=14

Callisto

Linen bag holder used separately or coupled with Atlas

Capacity: 160L

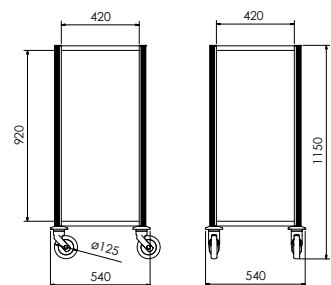
Standard equipment

- Anodised aluminium frame
- 2 models; mono and duo
- 4 swiveling wheels Ø125mm with non-marking thermoplastic layer
- 4 swiveling corner pads for protection

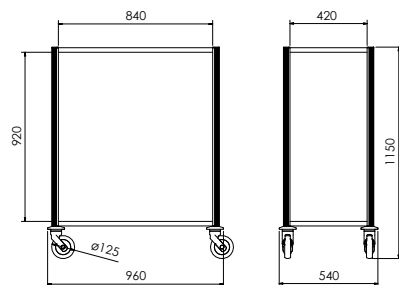
Options

- Linen bags 160l in polyester resistant to high temperature washing in different colors: dark blue, burgundy, sand
- Coupling hook with Atlas
- Ergonomic linen bag with vertical zipper

Callisto



Callisto Duo



	Width (mm)	Depth (mm)	Height (mm)	Wheels Ø (mm)	Reference
Callisto Mono	540	540	1150	125	11130100
Callisto Duo	540	960	1150	125	11130200

TRADITIONAL RANGE

Vega

Limited dimensions

Capacity: 3 to 4 rooms

Standard equipment

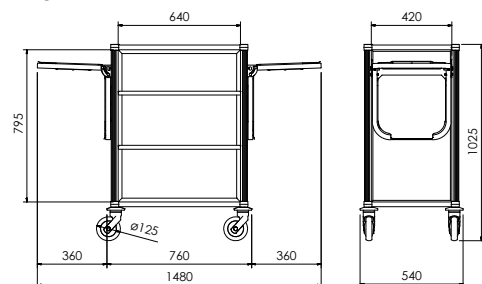
- Anodised aluminium frame
- 3 levels for ranging clean linen
- Partitions
- 4 swiveling wheels Ø125mm with non-marking thermoplastic layer
- 4 swiveling corner pads for protection
- A choice amongst different finishes (light grey, wenge oak look, black caviar look, almond look)

Options

- Waste bag holder mono and foldable base
 - Selective waste sorting; waste bag holder duplo
 - Waste bag curtain
- Linen bag holder and foldable base
 - Linen bag 100l dark blue, burgundy or sand
 - Lid for linen bag holder
- Removable tray for amenities 60 or 120mm
- Drawers
 - Amenities drawer
 - ↳ Linear dividers
 - ↳ Partitioning
 - Stationery drawer including linear dividers
- Doors (opening up to 270°)
- Coupling hook for bag holder Protea 80 Duo
- Horizontal steering handle



Vega



VEGA

Overall dimensions				Reference *
Width (mm)	Depth (mm)	Height (mm)	Wheels Ø (mm)	Base Model
760	540	1025	125	100401xx
Inside dimensions				
Width (mm)	Depth (mm)			
620	420			

OPTIONS



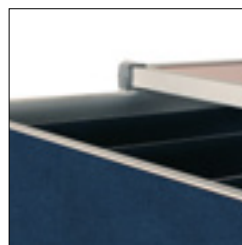
Removable tray for amenities 60 or 120mm



Stationery drawer including linear dividers



Amenities drawer



Linear dividers for drawers

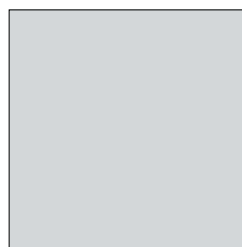


Waste bag holder and foldable base

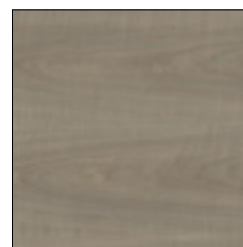


Doors

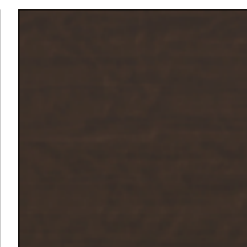
FINISHES



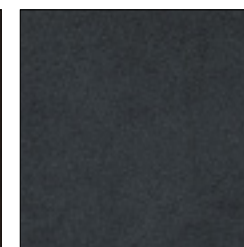
Light grey
Ref xx=09



Almond look
Ref xx=17



Wenge oak look
Ref xx=11



Black caviar look
Ref xx=14



HOUSEKEEPING



La Malle

EXCLUSIVE RANGE

Meet the great travellers of the early 20th century whilst Ascolia makes you rediscover the trunk concept and its symbolism.

Thanks to its compact dimensions La malle is easily taken into the room, leaving corridors free and therefore enabling room service with closed doors.

Do not be afraid to leave it in your corridors; passers-by will be delighted by its 5 star aesthetics.

Its manoeuvrability and ergonomics make it the ideal companion for your chamber maids

EXCLUSIVE RANGE

Gulliver 800

When room-service
happens unnoticed
in the traveller's eyes...

Capacity: 2 to 3 rooms

Standard equipment

- Anodised aluminium frame
- 1 compartment for soiled linen including a 110l bag and a compartment for garbage closed by 2 independent lids
- 2 levels for ranging clean linen
- 1 drawer for chemicals
- 1 stationery drawer
- 2 drawers for amenities, courtesy trays, ...
- 2 doors (opening up to 270°)
- 1 horizontal steering handle
- 4 swiveling wheels Ø125mm with non-marking polyamide layer
- 4 swiveling corner pads for protection
- A choice amongst different finishes (wenge oak look, black caviar look, brown buffalo look, almond look)

Options

- Partitioning for amenities drawers
- Mop holder and hook
- Sliding tray for vacuum cleaner
- Crowbar
- Removable box for re-filling of amenities
- **NEW** : Motorisation, see page 36-37



Gulliver 650

When room-service happens unnoticed in the traveller's eyes...

Capacity: 2 to 3 rooms

Standard equipment

- Anodised aluminium frame
- 1 drawer for amenities
- 3 levels for ranging clean linen
- 1 removable box for chemicals
- 2 doors (opening up to 270°)
- 1 horizontal steering handle
- 4 swiveling wheels Ø125mm with non-marking polyamide layer
- 4 swiveling corner pads for protection
- A choice amongst different finishes (wenge oak look, black caviar look, brown buffalo look, almond look)

Options

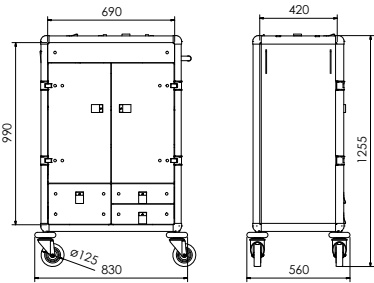
- Linear dividers or partitioning for amenities drawer
- Mop holder and hook
- Sliding tray for vacuum cleaner
- Compartments for stationery at inside of doors



Gulliver 800 and 650

EXCLUSIVE RANGE

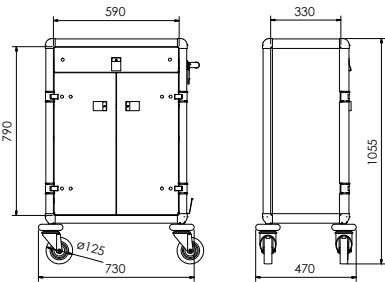
Gulliver 800



GULLIVER 800

Overall dimensions				Reference *
Width (mm)	Depth (mm)	Height (mm)	WheelsØ (mm)	Base Model
830	560	1255	125	101302xx
Inside dimensions				
Width (mm)	Depth (mm)			
690	420			

Gulliver 650



GULLIVER 650

Overall dimensions				Reference *
Width (mm)	Depth (mm)	Height (mm)	WheelsØ (mm)	Base Model
730	470	1055	125	101302xx
Inside dimensions				
Width (mm)	Depth (mm)			
590	330			



Motorisation
(Gulliver 800 only)



STANDARD EQUIPMENT



Drawer for chemicals

Handles on doors and
lids with leather finish

2 amenities drawers

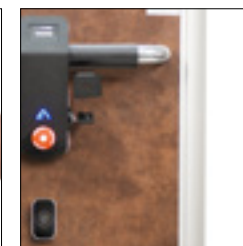


Stationery drawer

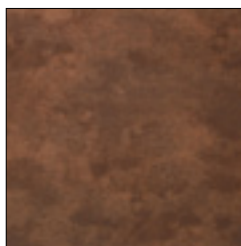
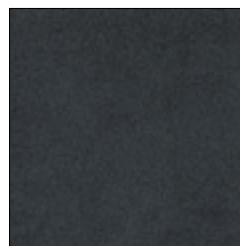
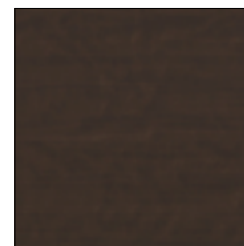
OPTIONS



Mop holder and hook

Partitioning for amenities
drawersRemovable box for
re-filling of amenities
(Gulliver 800 only)Sliding tray for
vacuum cleanerMotorisation
(Gulliver 800 only)

FINISHES

Brown buffalo look
Ref xx=16Black caviar look
Ref xx=14Aspect wengé
Ref xx=11Almond look
Ref xx=17

EXCLUSIVE RANGE

Despina 650 and 800

La malle in traditional version

Capacity: 4 to 6 rooms

Standard equipment

- Anodised aluminium frame
- 2 models; Despina 800 and 650
- Compartment for amenities with lid
- 3 levels for ranging clean linen
- 2 doors (opening up to 270°)
- 1 horizontal steering handle
- 4 swiveling wheels Ø125mm with non-marking polyamide layer
- 4 swiveling corner pads for protection
- A choice amongst different finishes (wenge oak look, black caviar look, brown buffalo look, almond look)

Options

- Linear dividers or partitioning for amenities compartment
- Drawers
 - Amenities drawer
 - Linear dividers
 - Partitioning
 - Stationery drawer, including linear dividers
 - Lock on doors
 - Lock on lid
- Accessories
 - Mop holder and hook
 - Broom holder
- Sliding tray for vacuum cleaner
- **NEW** : Motorisation (Despina 800 only), see pages 36-37

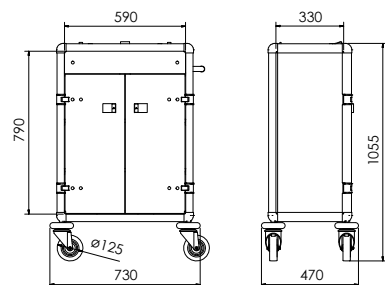


DESPINA 650



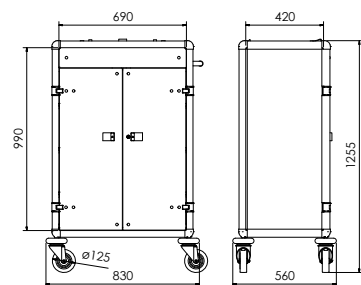
DESPINA 800

Despina 650



Overall dimensions				Reference *
Width (mm)	Depth (mm)	Height (mm)	Wheels Ø (mm)	Base Model
730	470	1055	125	101602xx
Inside dimensions				
Width (mm)	Depth (mm)			
590	330			

Despina 800



Overall dimensions				Reference *
Width (mm)	Depth (mm)	Height (mm)	Wheels Ø (mm)	Base Model
830	560	1255	125	101601xx
Inside dimensions				
Width (mm)	Depth (mm)			
690	420			

OPTIONS



Amenities and/or stationery drawer



Sliding tray for vacuum cleaner



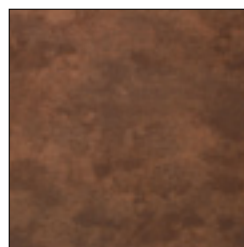
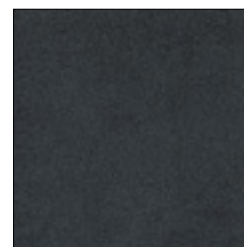
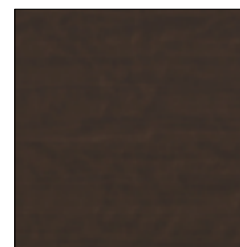
Mop holder and hook



Motorisation (Despina 800 only)



FINISHES

Brown buffalo look
Ref xx=16Black caviar look
Ref xx=14Aspect wengé
Ref xx=11Almond look
Ref xx=17



MOTORISATION

GULLIVER 800 and
DESPINA 800



ASCOLIA WHEELS YOUR TROLLEY!

LESS EFFORT, MORE JOY

The ergonomic controller allows
you an easy and intuitive use

Characteristics

- Progressive and silent acceleration
- Safety of use
- Great manoeuvrability
- Pivots on the spot
- Autonomy; 3 working days
- Charging time; 7 hours
- CE certification

Technical specifications

- Power ; 240 W
- Maximum forward speed : 5 km/h
- Maximum reverse speed : 3 km/h
- Batteries AGM 12V



EXCLUSIVE RANGE

Cortes

NEW

Collection of soiled linen and garbage,
in addition to Despina

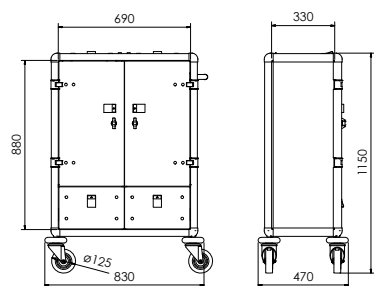
Standard equipment

- Anodised aluminium frame
- 1 compartment for soiled linen with bag 100l and lid
- 1 compartment for garbage bag with lid
- 2 drawers 20l each for chemicals, stationery, ...
- 2 doors (opening up to 270°)
- 1 horizontal steering handle
- 4 swiveling wheels Ø125mm with non-marking polyamide layer
- 4 swiveling corner pads for protection
- A choice amongst different finishes (wenge oak look, black caviar look, brown buffalo look, almond look)

Options

- Broom holder or vacuum cleaner hose holder
- Sliding tray for vacuum cleaner

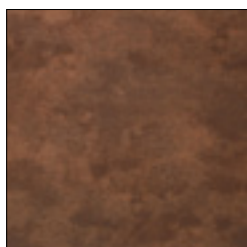




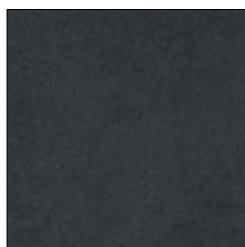
CORTES

Overall dimensions				Reference *
Width (mm)	Depth (mm)	Height (mm)	Wheels Ø (mm)	Base Model
830	470	1150	125	112101xx
Inside dimensions				
Width (mm)	Depth (mm)			
690	330			

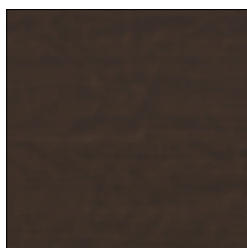
FINISHES



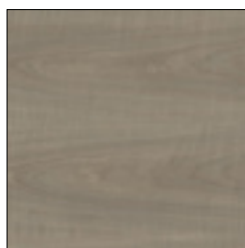
Brown buffalo look
Ref xx=16



Black caviar look
Ref xx=14



Wenge oak look
Ref xx=11



Almond look
Ref xx=17



SATELLITE OF "LA MALLE"

Magellan

La malle with limited dimensions makes it can be taken into the room

Standard equipment

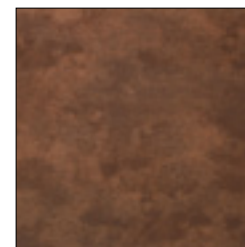
- Anodised aluminium frame
- 1 compartment for soiled linen with bag 100l, lid and door
- 1 drawer 20l for chemicals, stationery, ...
- 4 swiveling wheels Ø125mm with non-marking polyamide layer
- 4 swiveling corner pads for protection
- A choice amongst different finishes (wenge oak look, black caviar look, brown buffalo look, almond look)

Option

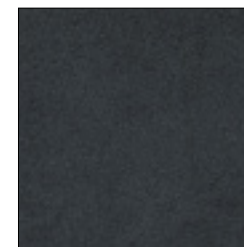
- †Coupling hook with Despina



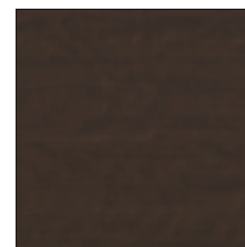
FINISHES



Brown buffalo look
Ref xx=16



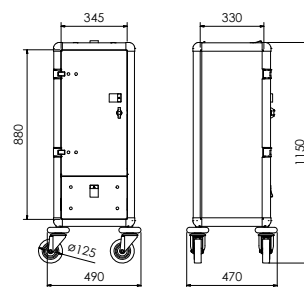
Black caviar look
Ref xx=14



Wenge oak look
Ref xx=11



Almond look
Ref xx=17



MAGELLAN

Overall dimensions				Reference *
Width (mm)	Depth (mm)	Height (mm)	Wheels Ø (mm)	Base Model
490	470	1150	125	111801xx
Inside dimensions				
Width (mm)	Depth (mm)			
345	330			

SMALL CORRIDORS RANGE

Pluton

Housekeeping trolley for small corridors

Capacity: 3 to 5 rooms

Standard equipment

- Anodised aluminium frame
- 2 models: Pluton 520 and 650
- 1 open compartment for amenities
- 3 levels for ranging clean linen
- 1 horizontal steering handle
- 4 swiveling wheels Ø125mm with non-marking thermoplastic layer
- 4 swiveling corner pads for protection
- A choice amongst different finishes (light grey, wenge oak look, black caviar look, almond look)

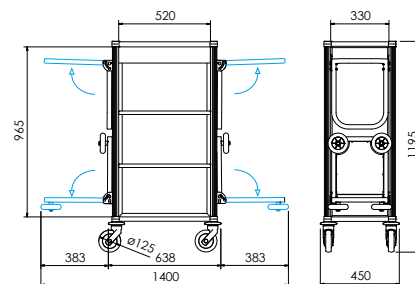
Options

- Waste bag holder mono and foldable base
 - Waste bag curtain
- Linen bag holder and foldable base
 - Linen bag 100l dark blue, burgundy or sand
- Amenities compartment
 - Linear dividers
 - Partitioning

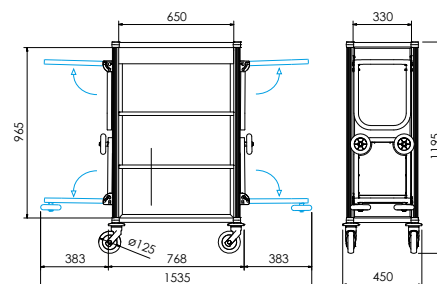




Pluton 520



Pluton 650



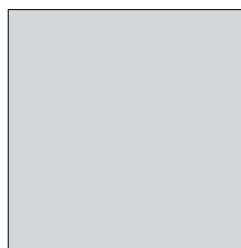
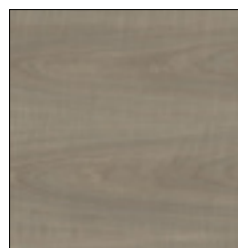
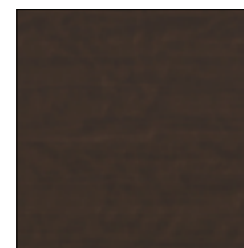
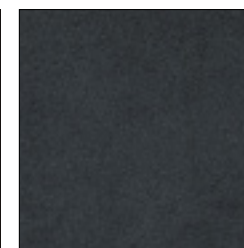
PLUTON 520

Overall dimensions				Reference *
Width (mm)	Depth (mm)	Height (mm)	Wheels Ø (mm)	Base Model
638	450	1195	125	100802xx
Inside dimensions				
Width (mm)	Depth (mm)			
520	330			

PLUTON 650

Overall dimensions				Reference *
Width (mm)	Depth (mm)	Height (mm)	Wheels Ø (mm)	Base Model
768	450	1195	125	100801xx
Inside dimensions				
Width (mm)	Depth (mm)			
650	330			

FINISHES

Light grey
Ref xx=09Almond look
Ref xx=17Wenge oak look
Ref xx=11Black caviar look
Ref xx=14

SMALL CORRIDORS RANGE

Minos

Intended for small lifts, for overcoming small steps, ...

Capacity: 3 to 5 rooms

Standard equipment

- Anodised aluminium frame
- 1 open compartment for amenities
- 3 levels for ranging clean linen
- 1 foldable linen bag holder
- 1 horizontal steering handle
- Wheels
 - Minos 125 - 4 swiveling wheels Ø125mm with non-marking thermoplastic layer
 - Minos 300 - 2 swiveling wheels Ø125mm with non-marking thermoplastic layer and 2 fixed wheels Ø 300mm with polyurethane layer to allow to overcome small steps
- 4 swiveling corner pads for protection
- A choice amongst different finishes (light grey, wenge oak look, black caviar look, almond look)

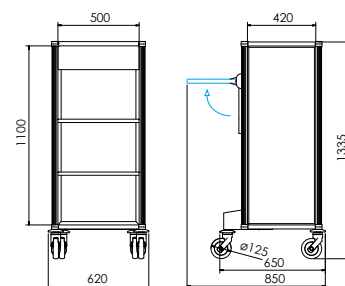
Options

- 1 door (opening up to 270°)
- Lid on amenities compartment





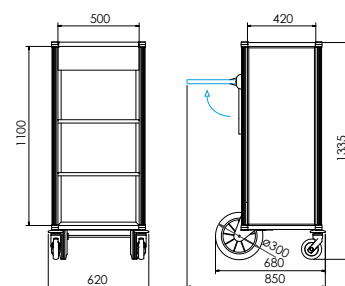
Minos 125



MINOS 125

Overall dimensions				Reference *
Width (mm)	Depth (mm)	Height (mm)	Wheels Ø (mm)	Base Model
620	650	1335	125	100701xx
Inside dimensions				
Width (mm)	Depth (mm)			
500	420			

Minos 300

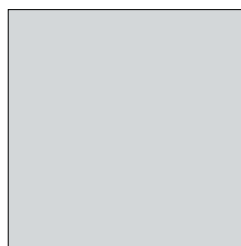
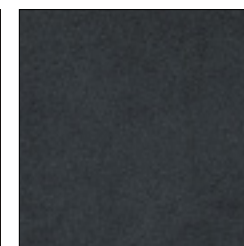


MINOS 300

Overall dimensions				Reference *
Width (mm)	Depth (mm)	Height (mm)	Wheels Ø (mm)	Base Model
620	680	1335	125/300	100702xx
Inside dimensions				
Width (mm)	Depth (mm)			
500	420			



FINISHES

Light grey
Ref xx=09Almond look
Ref xx=17Wenge oak look
Ref xx=11Black caviar look
Ref xx=14

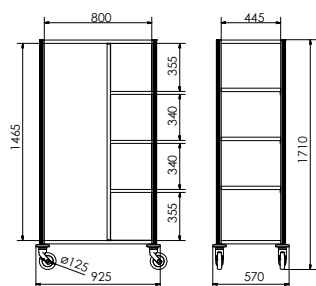
HOUSEKEEPING COMPLEMENTS

Daphnis

Dislodgement trolley

Standard equipment

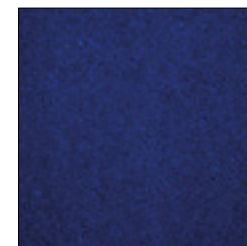
- Anodised aluminium frame
- 3 levels for ranging clean linen
- 1 base with carpet
- 1 integrated clothes hanger
- 4 swiveling wheels Ø125mm with non-marking thermoplastic layer
- 4 swiveling corner pads for protection
- A choice amongst different carpet colors (blue, red, brown, black)



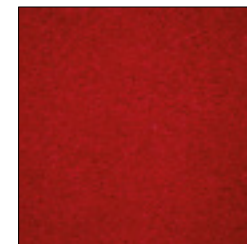
Width (mm)	Depth (mm)	Height (mm)	Wheels Ø (mm)	Classical M
925	570	1710	125	100901xx



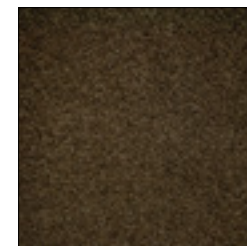
CARPET



Blue Ref (xx)=40



Red Ref (xx)=41



Brown Ref (xx)=43



Black Ref (xx)=42

Vesta

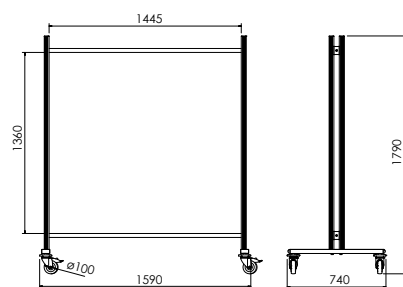
Mobile wardrobe

Standard equipment

- Anodised aluminium frame
- 1 large integrated clothes hanger
- 4 swiveling wheels Ø125mm with non-marking thermoplastic layer of which 2 with brake
- 4 swiveling corner pads for protection

Options

- Hat rack



Base (mm)	Height (mm)	Wheels Ø (mm)	Reference
1590x740	1790	125	18010100



BAG HOLDERS

Protea

Transport of soiled linen and /
or garbage

Standard equipment

- Anodised aluminium frame
- 4 models; mono, duo, trio, quattro
- For bags with a content of 80 or 110l
- Sac is fixed to trolley with a chromed steel ring
- For use with any type or format bag (minimum circumference 117cm)
- 4 swiveling wheels Ø75mm with non-marking thermoplastic layer
- 4 swiveling corner pads for protection

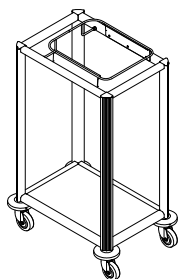
Options

- Lid
- Pedal
- Soft close system for lid
- Linen bags 80l in polyester resistant to high temperature washing in different colors: sand (plain only), blue, red, green, yellow (plain or with stripes).

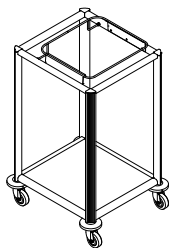
Bag is closed with nylon halyard and fix-lock.



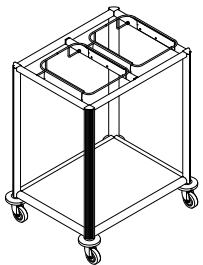




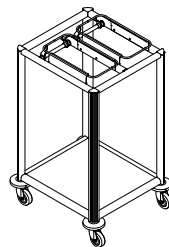
Reference *		
Base Model	With lid	With lid and pedal
11010100	11010200	11010300
Dimensions		
Width (mm)	Depth (mm)	Height (mm)
405	560	885



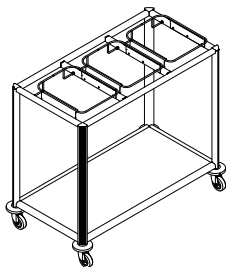
Reference *		
Base Model	With lid	With lid and pedal
11060100	11060200	11060300
Dimensions		
Width (mm)	Depth (mm)	Height (mm)
520	560	885



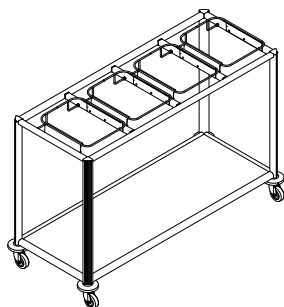
Reference *		
Base Model	With lid	With lid and pedal
11020100	11020200	11020300
Dimensions		
Width (mm)	Depth (mm)	Height (mm)
720	560	885



Reference *		
Base Model	With lid	With lid and pedal
11070100	11070200	11070300
Dimensions		
Width (mm)	Depth (mm)	Height (mm)
520	560	885



Reference *		
Base Model	With lid	With lid and pedal
11030100	11030200	11030300
Dimensions		
Width (mm)	Depth (mm)	Height (mm)
1030	560	885



Reference *		
Base Model	With lid	With lid and pedal
11040100	11040200	11040300
Dimensions		
Width (mm)	Depth (mm)	Height (mm)
1340	560	885



BAG HOLDERS

Mars 400-800

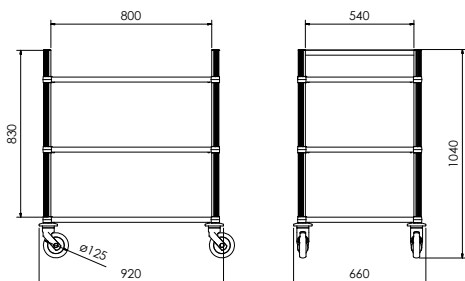
At ease in the corridors,
just like in a Spa!

Standard equipment

- Anodised aluminium frame
- 2 models; Mars 400 and 800 (volume respectively 150 and 300l)
- 4 swiveling wheels Ø125mm with non-marking thermoplastic layer
- 4 swiveling corner pads for protection

Options

- Linen bags 150 or 300l in polyester resistant to high temperature washing in different colors: dark blue, burgundy, sand
- Partitions (Mars 800 only)
- Lid (Mars 800 only)



MARS 800

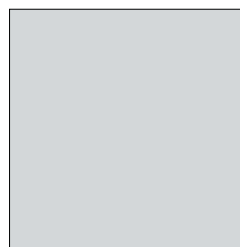
Width (mm)	Depth (mm)	Height (mm)	Wheels Ø (mm)	Base Model
920	660	1040	125	11140100

MARS 400

Width (mm)	Depth (mm)	Height (mm)	Wheels Ø (mm)	Base Model
660	520	1040	125	11140200



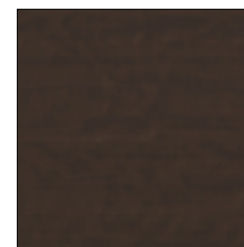
FINISHES



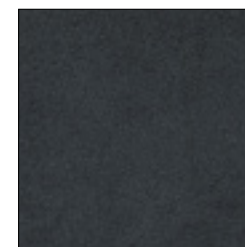
Light grey
Ref xx=09



Almond look
Ref xx=17

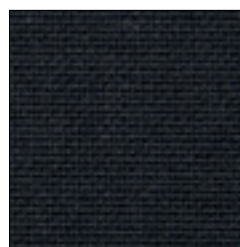


Wenge oak look
Ref xx=11

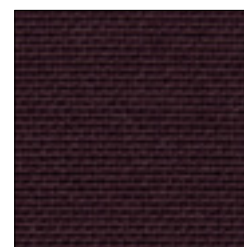


Black caviar look
Ref xx=14

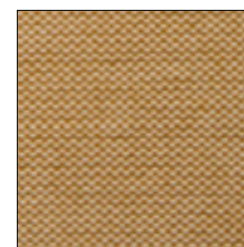
LINEN BAG COLORS



Dark blue



Burgundy



Sand

TRANSPORT, STORAGE AND DISTRIBUTION OF CLEAN LINEN

Antares

Distribution and/or storage of clean linen

Standard equipment

- Anodised aluminium frame
- 2 models; Antares 850 and 1250
- 3, 4 or 5 levels for ranging clean linen
- 4 swiveling wheels Ø125mm with non-marking thermoplastic layer
- 4 swiveling corner pads for protection

Options

- Horizontal steering handle
- Partitions
- Doors



ANTARES 850

Number of shelves	Depth (mm)	Height (mm)	Distance between shelves	Classic model	Partitions	Partitions & doors
3	660	1585	435	20010100	20010700	20011300
4	660	1585	325	20010200	20010800	20011400
5	660	1585	250	20010300	20010900	20011500

ANTARES 1250

Number of shelves	Depth (mm)	Height (mm)	Distance between shelves	Classic model	Partitions	Partitions & doors
3	660	1585	435	20010400	20011000	20011600
4	660	1585	325	20010500	20011100	20011700
5	660	1585	250	20010600	20011200	20011800



Metis

Distribution and/or storage
of clean linen

Standard equipment

- Modular shelving system in chromed steel
- 5 models for great modularity; Metis 610, 912, 1217, 1520 and 1826
- 4 or 5 levels for ranging clean linen
- 4 swiveling wheels Ø125mm with non-marking thermoplastic layer
- 4 swiveling corner pads for protection
- Material delivered flat packed ready to assemble

Options

- Horizontal steering handle
- Label holder
- Lateral and dorsal retaining rods with clips
- Dividers
- Clothes hanger
- Protective cover

	Width (mm)	Depth (mm)	Height (mm)	Number of shelves	Reference
Metis 610	610	460	1800	5	20031100
Metis 610	610	460	1800	6	20031600
Metis 912	912	460	1800	5	20031200
Metis 912	912	460	1800	6	20031700
Metis 1217	1217	460	1800	5	20031300
Metis 1217	1217	460	1800	6	20031800
Metis 1520	1520	460	1800	5	20031400
Metis 1520	1520	460	1800	6	20031900
Metis 1826	1826	460	1800	5	20031500
Metis 1826	1826	460	1800	6	20032000



COLLECTION OF SOILED LINEN

Missouri

Standard equipment

- Anodised aluminium container
- 3 models: Missouri 350, 690 and 1050
- Lid and front foldable
- 2 fixed and 2 swiveling wheels Ø200mm with non-marking rubber layer
- Wrap-around bumper for protection
- Horizontal steering handle
- Drainage channel and drain valve in trolley base



	Length (mm)	Width (mm)	Height (mm)	WheelsØ (mm)	VOLUME (L)	Reference
Missouri 350	950	550	980	160	350	74010300
Missouri 690	1140	690	1490	160	690	74010100
Missouri 1050	1390	810	1490	160	1050	74010200

Messipi

Spring loaded trolley;
stop the back pain!

Standard equipment

- Anodised aluminium container
- 4 models: Messipi 195, 280, 315 or 570
- Vertically moveable base to keep load at constant height for easy access
- 2 swiveling and 2 fixed wheels Ø125mm with non-marking rubber layer, arranged centrally



	Overall dimensions (mm)	Inside dimensions (mm)	Volume (L)	Reference
Messipi 195	1060 x 470 x 800	1010 x 600 x 460	195	74020900
Messipi 280	1060 x 650 x 800	1010 x 600 x 460	280	74021000
Messipi 315	1060 x 710 x 820	1000 x 650 x 485	315	74021100
Messipi 570	1460 x 750 x 920	1410 x 700 x 580	570	74021200

Sirius

Multi-purpose
polyethylene trolley

Standard equipment

- Polyethylene tank
- 2 models: Sirius 145 and 305
- 4 swiveling wheels Ø75 (Sirius 145) or 125mm (Sirius 305)



Options

- Lid

	Overall dimensions (mm)	Inside dimensions (mm)	Reference
Sirius 145	800 x 450 x 685	660 x 310 x 584	74050200
Sirius 305	990 x 686 x 762	902 x 597 x 622	74050300

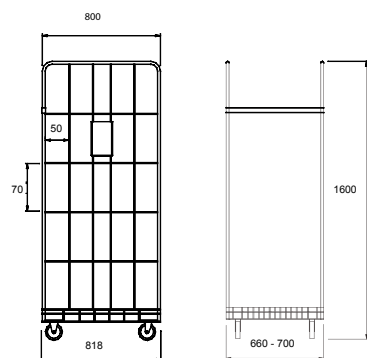
CONTAINER TROLLEYS

Leda

High wired container for linen transport

Standard equipment

- Galvanised steel container
- 2 partial doors (opening up to 270°)
- Lateral and back partitions
- 1 removable shelf
- 4 swiveling wheels Ø125mm with non-marking polyamide layer



Length	Width (mm)	Height (mm)	Reference
818	660	1600	7404100

MAINTENANCE

Lavezzi

The companion of the maintenance service

Standard equipment

- Anodised aluminium frame
- 1 compartment including 3 baskets with height 100mm and 1 basket with height 200mm for ranging amenities, bottles, chemicals, ...
- 1 platform for vacuum cleaner, mop or box
- 4 swiveling wheels Ø125mm with non-marking thermoplastic layer
- 4 swiveling corner pads for protection
- A choice amongst different finishes (light grey, wenge oak look, black caviar look, almond look)

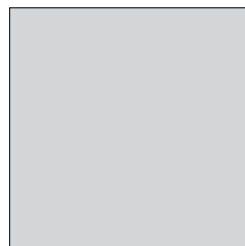
Options

- Shutter for open compartment
- Waste bag holder mono and foldable base
- Broom holder
- Vacuum cleaner hose holder



FINISHES

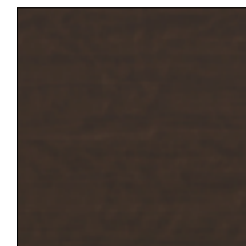
Overall dimensions			
Width (mm)	Depth (mm)	Height (mm)	Wheels Ø (mm)
740	540	1150	125
Inside dimensions			
Width (mm)	Depth (mm)		
620	420		



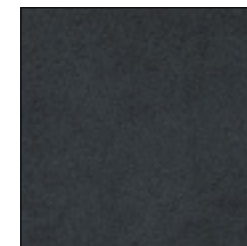
Light grey
Ref xx=09



Almond look
Ref xx=17



Wenge oak look
Ref xx=11



Black caviar look
Ref xx=14



ROOM SERVICE AND CATERING

Functionality, hygiene and easy maintenance are essential for your food- and drink distribution material.

Lightness, manoeuvrability and ergonomics will contribute to the well-being of the user, the aesthetics will delight the client!

By listening to you, Ascolia has developed a range of mobile furniture for the room service and catering departments.

TRADITIONAL RANGE

NEW

Balaton

Minibar restocking

Standard equipment

- Anodised aluminium frame
- 2 models; Balaton 520 and 800
- 1 open compartment for small products
- 3 interior possibilities :
 - 3 fixed shelves with retaining bars
 - 3 sliding trays
 - 3 drawers (depth 100mm) on telescopic rails, height adjustable
- Lockable shutter
- Wheels :
 - Balaton 520 – 4 swiveling wheels Ø125mm with non-marking thermoplastic layer
 - Balaton 800 – 2 fixed and 2 swiveling wheels Ø160mm with non-marking polyamide layer
- Grey wrap-around non-marking bumper
- Horizontal steering handle
- A choice amongst different finishes (light grey, wenge oak look, black caviar look, almond look)

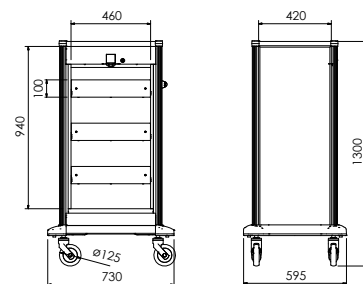
Options

- Waste bag holder mono and foldable base
 - Waste bag curtain
- Small products compartment
 - Linear dividers
 - Partitioning
 - Lid with or without lock
- Drawers
 - Linear dividers
 - Partitioning
 - Non-slip carpet
- Accessories
 - Stackable water tight box for tableware
 - 15 or 30l lateral container (bacbis)
- Extra protection via additional swiveling corner pads
- **NEW** : Motorisation, see page 65





Balaton 520

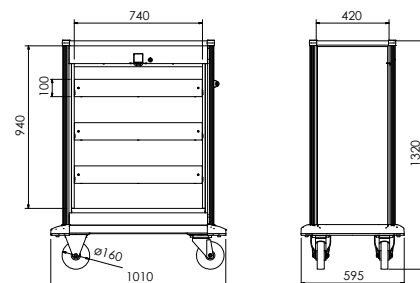


BALATON 520

Overall dimensions				Reference*	
Width (mm)	Depth (mm)	Height (mm)	Wheels Ø (mm)	with shelves	with 3 drawers
730	595	1300	125	170105xx	170107xx
Inside dimensions					
Width (mm)	Depth (mm)				
460	420				



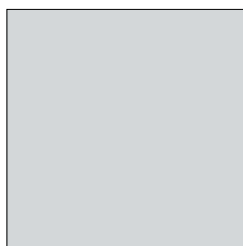
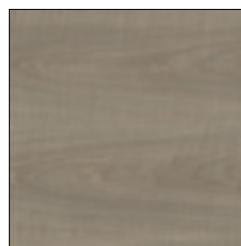
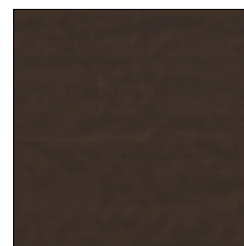
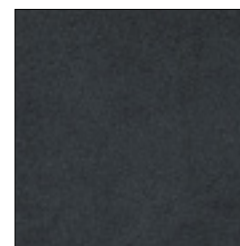
Balaton 800



BALATON 800

Overall dimensions				Reference *	
Width (mm)	Depth (mm)	Height (mm)	Wheels Ø (mm)	with shelves	with 3 drawers
1010	595	1320	160	170209xx	170211xx
Inside dimensions					
Width (mm)	Depth (mm)				
740	420				

FINISHES

Light grey
Ref xx=09Almond look
Ref xx=17Wenge oak look
Ref xx=11Black caviar look
Ref xx=14

EXCLUSIVE RANGE "LA MALLE"

Lugano

Minibar restocking

"La malle"
in minibar restocking version

Standard equipment

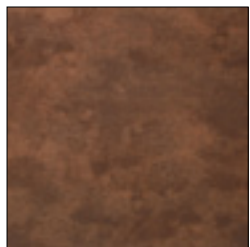
- Anodised aluminium frame
- 2 models; Lugano 650 and 800
- 1 compartment for small products with lid
- 2 interior possibilities :
 - Lugano 800 - 3 drawers (depth 100mm) on telescopic rails, height adjustable
 - Lugano 650 - 3 fixed shelves with retaining bars
- Doors (opening up to 270°) with lock
- 4 swiveling wheels Ø125mm with non-marking polyamide layer
- 4 swiveling corner pads for protection
- 1 horizontal steering handle
- A choice amongst different finishes (wenge oak look, black caviar look, brown buffalo look, almond look)

Options

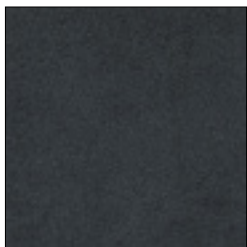
- Small products compartment
 - Linear dividers
 - Partitioning
- Drawers
 - Linear dividers
 - Partitioning
 - Non-slip carpet
- 5th steering wheel coupled with 4 swiveling wheels (Lugano 800 only)
- **NEW:** Motorisation, see page 65



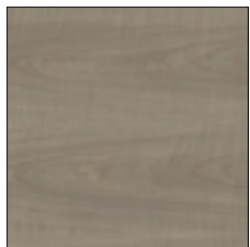
FINISHES



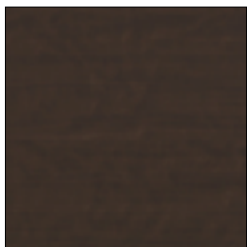
Brown buffalo look
Ref xx=16



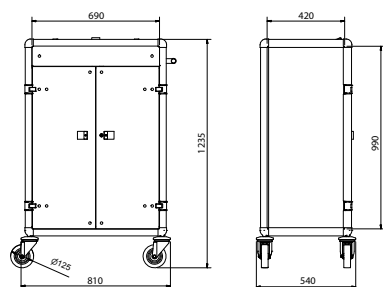
Black caviar look
Ref xx=14



Almond look
Ref xx=17



Wenge oak look
Ref xx=11



Overall dimensions				Reference *
Width (mm)	Depth (mm)	Height (mm)	Wheels Ø (mm)	Base Model
810	540	1235	125	170501xx
Inside dimensions				
Width (mm)	Depth (mm)			
690	420			

MOTORISATION

Balaton and Lugano



ROOM SERVICE TABLE

Lagoon

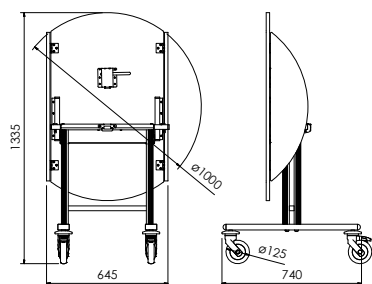
Standard equipment

- Anodised aluminium frame
- Lifting wooden surface with foldable sides (Ø 1m)
- Bases are nestable for space-saving storage
- 4 swiveling wheels Ø125mm with non-marking thermoplastic layer of which 2 with brake
- 4 swiveling corner pads for protection
- Material delivered flat packed ready to assemble

Options

- Solar hotbox with rails
- Fleece protection





Ø (mm)	Height (mm)	Type	Wheels Ø (mm)	Reference
1000	750	swiveling	125	17030100

ROLLING TABLES

Michigan

The aesthetic rolling table

Standard equipment

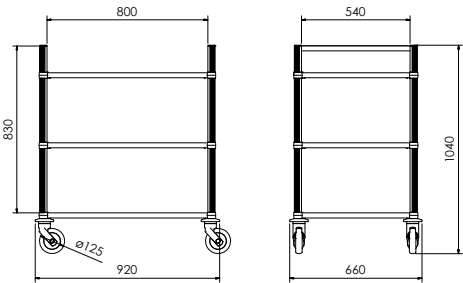
- Anodised aluminium frame
- 2 or 3 removable shelves in compact panel for easy cleaning
- 4 swiveling wheels Ø125mm with non-marking thermoplastic layer
- 4 swiveling corner pads for protection
- A choice amongst different finishes (light grey, wenge oak look, black caviar look, almond look)

Options

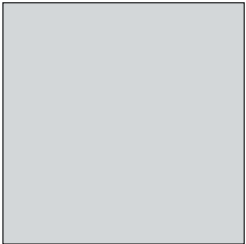
- 15 or 30l lateral container (bacbis)
- Partitions
- Doors



Overall dimensions				Reference *
Width (mm)	Depth (mm)	Height (mm)	Wheels Ø (mm)	Base Model
920	660	1040	125	150201xx
Inside dimensions				
Width (mm)	Depth (mm)			
800	540			



FINISHES



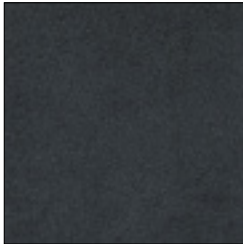
Light grey
Ref xx=09



Almond look
Ref xx=17



Wenge oak look
Ref xx=11



Black caviar look
Ref xx=14

Baringo

The full stainless steel!

Standard equipment

- Stainless steel frame
- 3 models: 700, 900 and 1100mm
- Noise minimising coating on lower side
- 2 or 3 levels
- 4 swiveling wheels
Ø125mm with non-marking thermoplastic layer
- 4 swiveling corner pads for protection

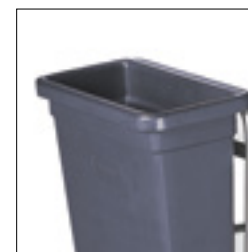


Options

- Stainless steel container 211
- Container 45l



	Width (mm)	Depth (mm)	Height (mm)	Wheels Ø (mm)	Distance between shelves (mm)	Reference
Baringo 642	700	500	950	125	585	74060100
Baringo 643	700	500	950	125	275	74060200
Baringo 852	900	600	950	125	585	74060200
Baringo 853	900	600	950	125	275	74060400
Baringo 1052	1100	600	950	125	585	74060500
Baringo 1053	1100	600	950	125	275	74060600



RACKING TROLLEYS

For a fast and efficient service;
the racking trolleys

Aral

Selection criteria

- The number of trays
- The distance between the slides depending on the height of your glasses, cups, ... (2 distances available 100 and 125mm)
- The type of normalised tray used : Gastronorm (325x530mm), or Euronorm (370 x 530 mm)
- Different widths available for multiple choices:
 - **Aral** : 1 column for ranging trays
 - **Baikal** : 2 columns for ranging trays
 - **Victoria** : 3 columns for ranging trays

Standard equipment

- Welded racking trolley in anodised aluminium
- Silence, durability and hygiene thanks to large welded rails
- Between 5 and 14 trays per column according to model chosen
- 3 standard heights available: 1255, 1455 and 1655mm
- 2 distances between slides available: 100 and 125mm
- 4 swiveling wheels Ø125mm with non-marking thermoplastic layer
- 4 swiveling corner pads for protection

Options

- Partitions plus doors
- Upper railing 150mm
- Lateral garbage bag holder
- Lateral foldable worksurface
- 15 or 30l lateral container (bacbis)
- Horizontal steering handle
- Compact panel top with 50mm edge
- Brake on 2 swiveling wheels



Baikal

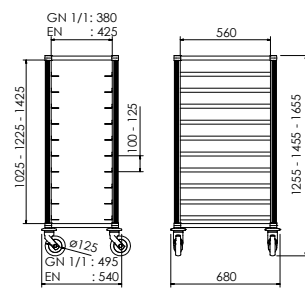


Victoria





Aral

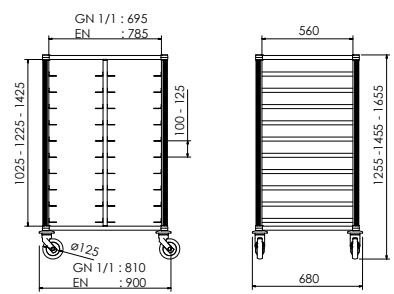


ARAL

Overall dimensions			
Width (mm)	Depth (mm)	Height (mm)	WheelsØ (mm)
495/540	680	1255 - 1455 - 1655	125
Inside dimensions			
Width (mm)	Depth (mm)		
380/425	560		



Baikal

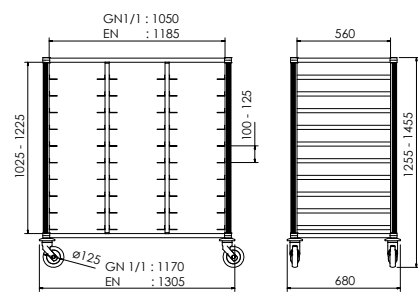


BAIKAL

Overall dimensions			
Width (mm)	Depth (mm)	Height (mm)	WheelsØ (mm)
810/900	680	1255 - 1455 - 1655	125
Inside dimensions			
Width (mm)	Depth (mm)		
695/785	560		



Victoria



VICTORIA

Overall dimensions			
Width (mm)	Depth (mm)	Height (mm)	WheelsØ (mm)
1170/1305	680	1255 - 1455	125
Inside dimensions			
Width (mm)	Depth (mm)		
1050/1185	560		



OPTIONS



Compact panel top
with 50mm edge



Lateral garbage
bag holder



Lateral garbage
bag holder



Lateral foldable
worksurface



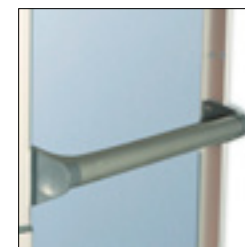
15l lateral
container (bacbis)



30l lateral
container (bacbis)

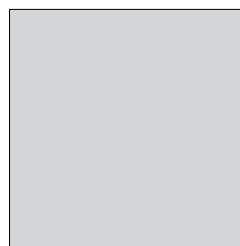


Brake on 2 swiveling
wheels



Horizontal steering handle

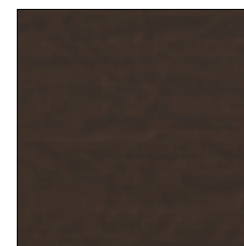
FINISHES



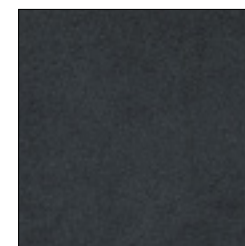
Light grey
Ref xx=09



Almond look
Ref xx=17



Wenge oak look
Ref xx=11



Black caviar look
Ref xx=14



LOBBY

You wish a high quality welcome for your guests; the first impression is made only once.

By listening to you, Ascolia has developed a range of mobile furniture for the reception area to make this first impression an impeccable one.

LUGGAGE

Everest

Luxury luggage trolley

Standard equipment

- Useful width of 900mm
- Large integrated clothes hanger
- Base with carpet (changeable)
- Non-marking wrap-around flexible bumper
- 2 fixed and 2 swiveling wheels Ø200mm,
 - ultra-silent
 - non-marking rubber
- Finishes: natural anodised aluminium, anodised aluminium chrome look, gold anodised aluminium, bright gold anodised aluminium, NEW : anodised aluminium bronze look
- Carpet colors: blue, red, black, brown

Options

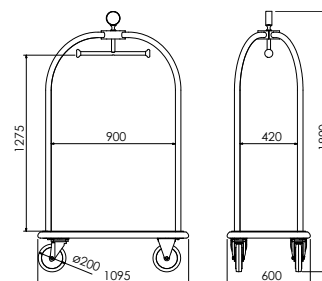
- Personalisation of the crown with logo of your establishment
- Wheels with brake
- Pneumatic wheels Ø230mm
- Lateral retaining bars
- Protective cover (can be personalised)
- **NEW:** Motorisation, see page 79-81



Everest anodised aluminium bronze look



Everest bright gold anodised aluminium



Overall dimensions				
Width (mm)	Depth (mm)	Height (mm)	Wheels Ø (mm)	Reference *
1095	600	1890	200	121301 (xx)
Inside dimensions				
Width (mm)	Depth (mm)	Height (mm)		
900	420	1275		

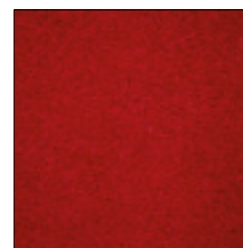


Pneumatic wheel
Ø230mm

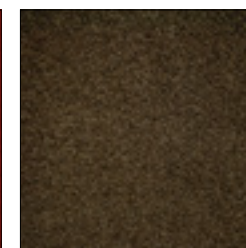
CARPET



Blue Ref (xx)=40



Red Ref (xx)=41



Brown Ref (xx)=43



Black Ref (xx)=42





ASCOLIA WHEELS YOUR TROLLEY

LESS EFFORT, MORE JOY!





e everest natural anodised aluminium



The ergonomic controller allows you an easy and intuitive use

Characteristics

- Progressive and silent acceleration
- Safety of use
- Great manoeuvrability;
pivots on the spot
- Autonomy; 3 working days
- Charging time; 7 hours
- CE certification

Technical specifications

- Power ; 240 W
- Maximum forward speed : 5 km/h
- Maximum reverse speed : 3 km/h
- Batteries AGM 12V



LUGGAGE

Vesuvio

Group luggage trolley,
a great classic

Standard equipment

- 3 useful widths: 750, 900 and 1100mm
- Integrated clothes hanger
- Base with carpet (changeable)
- Non-marking wrap-around flexible bumper
- 2 fixed and 2 swiveling wheels Ø200mm, ultra-silent, non-marking rubber
- Finishes: natural anodised aluminium, gold anodised aluminium
- Carpet colors: blue, red, black, brown

Options

- Personalisation of the crowns with logo of your establishment
- Wheels with brake
- Pneumatic wheels Ø230mm
- Protective cover (can be personalised)
- **NEW** : motorisation



Pneumatic wheel
Ø230mm



Vesuvio natural anodised aluminium



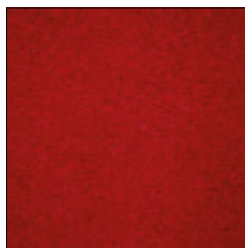


CARPET

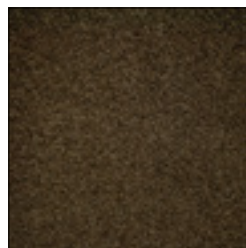
Vesuvio gold anodised aluminium



Blue Ref (xx)=40



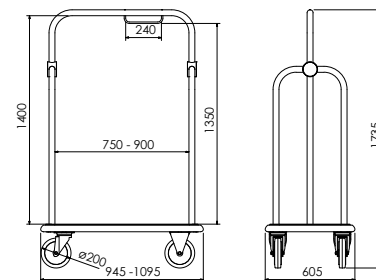
Red Ref (xx)=41



Brown Ref (xx)=43



Black Ref (xx)=42



VESUVIO 750

Overall dimensions				
Width (mm)	Depth (mm)	Height (mm)	Wheels Ø (mm)	Reference *
945	605	1735	200	120501xx
Inside dimensions				
Width (mm)	Height (mm)			
750	1350			

VESUVIO 900

Overall dimensions				
Width (mm)	Depth (mm)	Height (mm)	Wheels Ø (mm)	Reference *
1095	605	1735	200	120501xx
Inside dimensions				
Width (mm)	Height (mm)			
900	1350			

VESUVIO 1100

Overall dimensions				
Width (mm)	Depth (mm)	Height (mm)	Wheels Ø (mm)	Reference *
1195	605	1735	200	120501xx
Inside dimensions				
Width (mm)	Height (mm)			
1100	1350			

LUGGAGE

Fuji

Elegance and refinement.
Reduced space

Standard equipment

- 2 useful widths: 750 and 900mm
- Integrated clothes hanger
- Base with carpet (changeable)
- Non-marking wrap-around flexible bumper
- 2 fixed and 2 swiveling wheels Ø200mm, ultra-silent, non-marking rubber
- Finishes: natural anodised aluminium, gold anodised aluminium
- Carpet colors: blue, red, black, brown

Options

- Personalisation of the crowns with logo of your establishment
- Wheels with brake
- Pneumatic wheels Ø230mm
- Protective cover (can be personalised)



Pneumatic wheel
Ø230mm

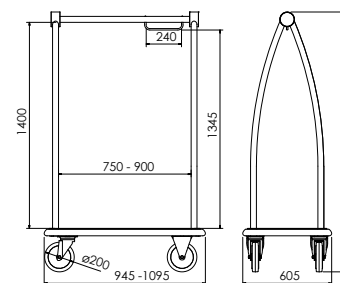


Fuji natural anodised aluminium





Fuji gold anodised aluminium



FUJI 750

Overall dimensions				Reference
Width (mm)	Depth (mm)	Height (mm)	WheelsØ (mm)	
945	605	1760	200	120101xx
Inside dimensions				
Width (mm)	Height (mm)			
750	1345			

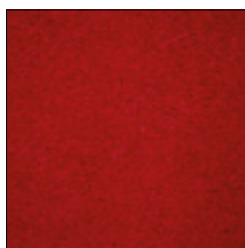
FUJI 900

Overall dimensions				Reference
Width (mm)	Depth (mm)	Height (mm)	WheelsØ (mm)	
1095	605	1760	200	120301xx
Inside dimensions				
Width (mm)	Height (mm)			
900	1345			

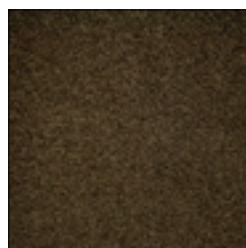
CARPET



Blue Ref (xx)=40



Red Ref (xx)=41



Brown Ref (xx)=43



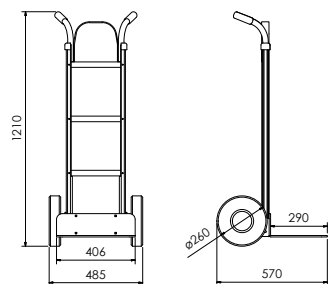
Black Ref (xx)=42

LUGGAGE

Stromboli

Standard equipment

- Aluminium hand truck
- Delivered with a shovel
- 2 comfort wheels Ø260mm in micro cellular foam



Options

- Tubular extension
- Pair of support legs



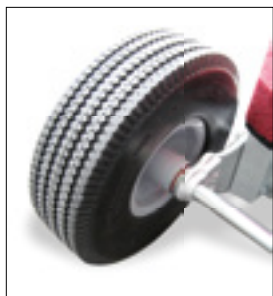
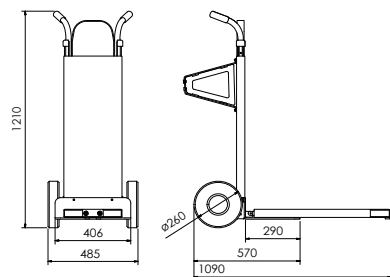
Ubinas

Standard equipment

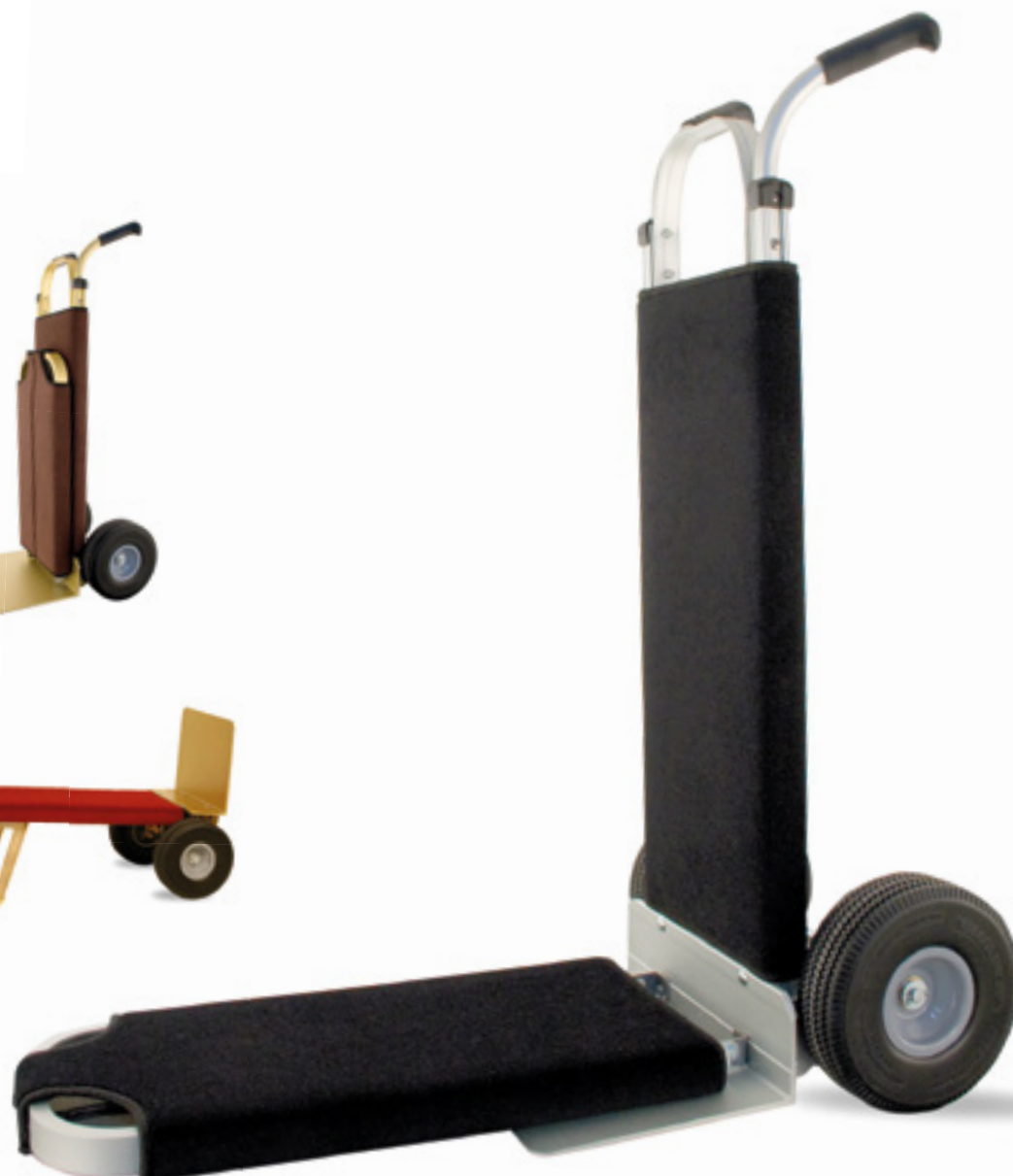
- Anodised aluminium hand truck
- Removable and washable carpet
- Foldable extension
- 2 comfort wheels Ø260mm in micro cellular foam
- Finishes: natural anodised aluminium, gold anodised aluminium
- Carpet colors: blue, red, black, brown

Options

- Pair of support legs



Comfort wheel Ø260mm
in micro cellular foam



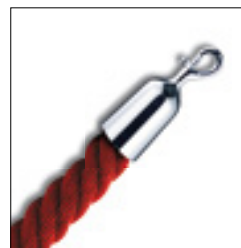
GUIDAGE

Luxor

Standard equipment

Standard equipment

- Guidance pole in stainless steel
- Multi-directional head allows for ropes to be attached in multiple directions
- Large weighted base provides excellent stability (8kg)
- Finishes: chromed, nickel mat or brass

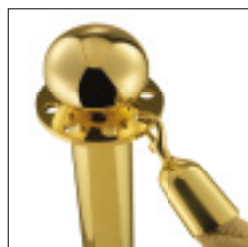
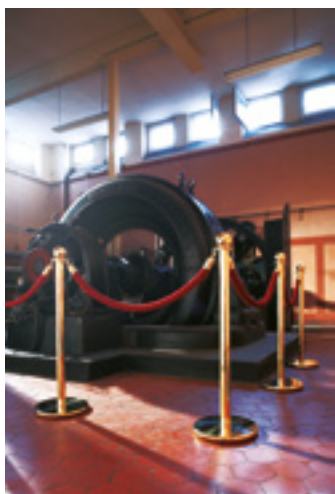


Crown

Classic and elegant for luxury reception venues

Standard equipment

- Guidance pole in stainless steel
- Multi-directional head allows for ropes to be attached in multiple directions
- Large weighted base provides excellent stability (8kg)
- Finishes: chromed or brass



GUIDAGE

Abydos

Belt system

Standard equipment

- 2.3m self-restrained belt
- 1 rope and 3 connection points
- Large weighted base (9kg) with anti-slip and non-marking rubber
- Finishes: chromed, brass, or stainless steel

Options

- Belt 3.7m
- Belt personalisation with logo and/or text



Dikos

Information panel with
aluminium frame

Standard equipment

- 2 formats: A4 (210 x 297 mm) or A3 (420 x 297 mm) horizontal or vertical
- Finishes : chromed, nickel mat or brass
- For use on Luxor or Abydos poles only

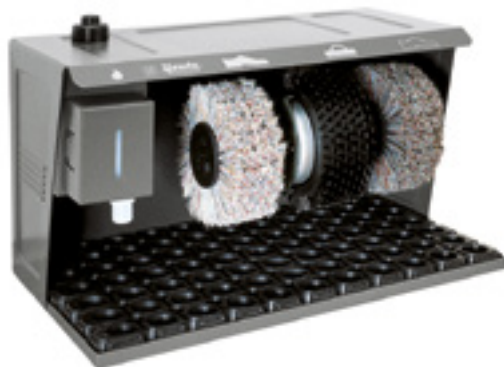


Shoe Shine Machine

Easy comfort

Ref. 24014908

- Manual switch on/off
- 230 v
- 100 W
- Polisher dispenser 0,2L
- 490x320x310 mm
- Warranty: 2 years
- Color: graphite



Cosmo Plus

Ref. 24014208

- Manual switch on / automatic switch off
- 230 v
- 130 W
- Polisher dispenser 0,75L
- 600x420x950 mm
- Warranty: 3 years
- Color: claret, graphite, black, silver



Cosmo

Ref. 24016009



Ronda 30 Standard

Ref. 24014608

- Manual switch on / automatic switch off
- 230 v
- 130 W
- Polisher dispenser 0,75L
- 460x300x790 mm
- Warranty: 3 years
- Color: claret, graphite, black, silver



Elipse

Ref. 2404405

- Manual switch on / automatic switch off
- 230 v
- 150 W
- Polisher dispenser 0,75L
- Ø440x1270 mm
- Warranty: 3 years
- Color: claret, graphite, black, silver





IN-ROOM EQUIPMENT

Your guests will appreciate a personalised welcome ...

By listening to you, Ascolia has developed a range of products to equip the hotel rooms of your establishment and guarantee high standards of customer service.



Tea & Coffee Facilities

Ascolia Eco Environment Friendly Solution

Save Water
Save Energy
Save Space
Save the Environment
Save Money

Ascolia Eco

Ref. 22010505

- Cordless kettle 0,5L - 2 cups !
- Contemporary Design
- Concealed heating element: 800W
- Stainless steel
- Easy to clean
- 220-240 V / 50-60 HZ
- Manual switch on/off
- Automatic Shut-off
- 2-year warranty



Tefal Mini (0,8L)

Ref. 22010805

- Concealed heating element
- 220-240 V / 50-60 HZ
- 2200W / 2400W
- Manual switch on/off
- Automatic Shut-off
- 2-year warranty

**Cool Touch
and Easy to Clean !**



GUEST WELCOME

Courtesia 28 Eco

Ref. 22152854

Elegant Hospitality tray including :

- Base tray 385x285x8 mm
- Sachet Tray
- Kettle Ascolia Eco

Standard color black

Other colors and design upon request

Courtesia 28 Mini

Ref. 22152864

Elegant Hospitality tray including :

- Base tray 385x285x8 mm
- Sachet Tray
- Kettle Tefal Mini

Standard color black

Other colors and design upon request

Options



Nespresso machines



Hotel box

Coffee glasses 15 ml
(borosilicate double wall)

Tea & Coffee Facilities

Courtesia 30 Eco

Ref. 22153055

Elegant Hospitality tray including :

- Base tray 390x300x40 mm
- Sachet Tray 150x90x50 mm
- Kettle Ascolia Eco

Standard colors black and brown

Other colors and design upon request

Courtesia 35 Eco

Ref. 22153555

Elegant Hospitality tray including :

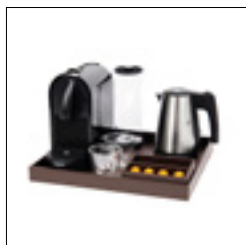
- Base tray 390x350x40 mm
- Sachet Tray 150x90x50 mm
- Kettle Ascolia Eco

Standard colors black and brown

Other colors and design upon request



Options



Nespresso machines



Hotel box



Coffe glasses 15 ml
(borosilicate double wall)

GUEST WELCOME

Courtesy 30 Mini

Ref. 22153065

Elegant Hospitality tray including :

- Base tray 390x300x40 mm
- Sachet Tray 150x90x50 mm
- Kettle Tefal Mini

Standard colors black and brown

Other colors and design upon request

Courtesy 35 Mini

Ref. 22153565

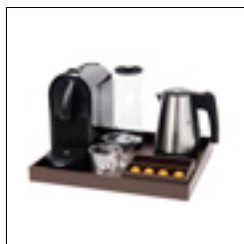
Elegant Hospitality tray including :

- Base tray 390x350x40 mm
- Sachet Tray 150x90x50 mm
- Kettle Tefal Mini

Standard colors black and brown

Other colors and design upon request

Options



Nespresso machines



Hotel box

Coffee glasses 15 ml
(borosilicate double wall)

Nespresso Machines



Inissia White

(Krups XN1001) - Ref. 22020103



Inissia Black

(Magimix 11350B) - Ref. 22020104



Inissia Red Flame

(Krups XN1005) - Ref. 22020109

- New Compact Brewing Unit technology
- Auto Off system (9 min.)
- 19 Bar pressure pump
- Thermobloc heating element

- Espresso and Lungo
- Ejection of used capsule
- 1260 W
- Warranty 2 year

WHAT ELSE ?



Nespresso U black

(Magimix 11340B) - Ref. 22020204

- Compact Brewing Unit technology
- Auto Off system (9 min.)
- 19 Bar pressure pump
- Thermobloc heating element

- Ristretto, Espresso and Lungo
- Ejection of used capsule
- 1260 W
- Warranty 2 year



Pixie Metal Grey

(M110) - Ref. 22020305

- Compact Brewing Unit technology
- Auto Off system (30 min.)
- 19 Bar pressure pump
- Thermobloc heating element



Pixie

(Krups XN3005) - Ref. 22020310

- Ristretto, Espresso and Lungo
- Ejection of used capsule
- 1260 W
- Warranty 2 year

Nespresso Machine

- Compact Brewing Unit technology
- Auto Off system (9 min.)
- 19 Bar pressure pump
- Thermobloc heating element
- Ristretto, Espresso and Lungo
- Ejection of used capsule
- 1260 W
- Warranty 2 year



Citiz

(Krups XN720T) - Ref. 22020410



Citiz black

(Magimix 11296B) - Ref. 22020404

Alarm Clock

WakeUp (AJ3123/12)

Philips alarm clock radio

Ref. 22093123

This stylish radio alarm clock looks nice and wakes you up in time. It has a built-in AM/FM radio and gives you the choice of waking up to your favourite station or with a buzzer.

- Easy to use
- Alarms: 24-hour alarm reset, Buzzer Alarm, Radio
- Alarm, Repeat alarm (snooze), Sleep timer
- Clock/Version: Digital
- 4-digit display
- Sound: Output power (RMS): 100 mW - Mono
- Volume Control: rotary
- 220/230 V 50Hz



Ironing Centre



Excelia Supersteam Station

Ref. 22051808

- A unique minimalist design
- Save space on the bar in the wardrobe
- Invisible hanging system when open
- Auto-off Station
- Anti-theft
- Fire retardant
- Easy for your guest and employees
- 2-year warranty
- Ajouter : GS/CE norms

Supersteam Iron

Ref. 22061808

- Steam Iron
- A Smart Design!
- Ergonomic rubber handle
- Auto-shut off
- Anti-calc
- Anti-drip
- Self-cleaning
- Ceramic Soleplate
- Power cord: 2.5M
- 1830-2200W 220-240V 50/60Hz
- 2-year warranty



NO MAINTENANCE !



Excelia Dry Station

Ref. 22051102

- A unique minimalist design
- Save space on the bar in the wardrobe
- Invisible hanging system when open
- Auto-off dry station
- Security strap to prevent people to take the iron
- Anti-theft
- Fire retardant
- Easy for your guest and employees
- 2-year warranty

Irona Dry

Ref. 22061002

- Auto-off dry iron
- 30 sec horizontal - 8 min vertical
- Elegant & Ergonomic Design
- No maintenance
- Comfort rubber handle
- 1000 W
- 220-240 V / 50-60 HZ
- 2,5 m cable
- GS/CE norms
- 2-year warranty



Ironing Centre



Conforta
Ref. 22051801



Fixa
Ref. 22070304



Luggage Rack

Venezia

Ref. 22137004

- Wooden luggage rack
- A perfect combination between contemporary elegance and natural materials
- Resistant up to 80 kg
- Dim.: 600 x 500 x h 600 mm



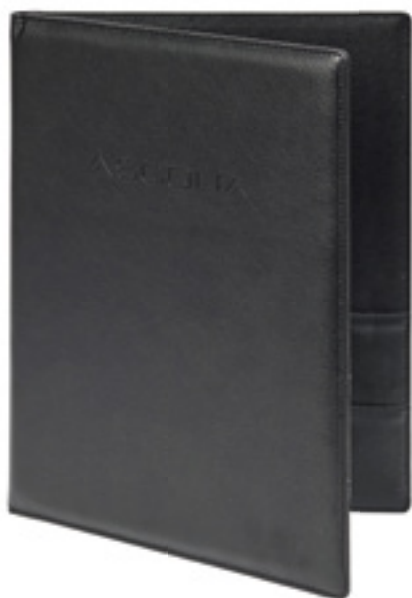
Florenzia

Ref. 22130212

- Exclusive wooden luggage rack
- Wood - Aluminium - Leather
- Resistant up to 80 kg
- Dim.: 600 x 500 x h 600 mm



Stationery Nevada



Directa

Ref. 22140215

- Guest directory leatherette finishing
- Black color (other colors or design available upon request)
- Dim. 320x240x4mm



Clipnota

Ref. 22140915

- Guest directory with clip leatherette finishing
- Brown color (other colors or design available upon request)
- Dim. 240x320x6 mm



Deskina

Ref. 22140115

- Desk blotter leatherette finishing
- Black color (other colors or design available upon request)
- Dim. 470x350x6 mm

THE ELEGANT LEATHERETTE PRODUCTS RANGE A SERVICE BEYOND EXPECTATIONS

Artica

Ref. 22101806

- Ice bucket stainless steel with leatherette finishing
- Stainless steel tongs
- Black color (other colors or design available upon request)
- Dim. Ø133 x height 155 mm



Cubina

Ref. 23051315

- Tissue box Leatherette finishing
- Bottom opening
- Black color (other colors or design available upon request)
- Dim. 130x130x145 mm

Rondina

Ref. 22082704

- Waste basket round PVC black leatherette wrap
- Dimensions: Ø225 x height 270 mm

Double walls

Options



Rondina brown upon request



Waste bin Brabantia



Corbina Black

(Brabantia 181207 / 7L)

Ref. 22080704



Corbina Steel

(Brabantia 181122 / 7L)

Ref. 22080807



Brilliant Steel

(Brabantia 364327 / 11L)

Ref. 22081107

10 YEARS WARRANTY



Etoufa Steel 30L

Ref. 22093007

- Ideal for the use in hotels and institutions
- Simple design
- Brilliant Steel
- Tested and certified by RWTÜV Germany



Etoufa steel 7L

Ref. 22090707

- Ideal for the use in hotels and institutions
- Simple design
- Brilliant Steel
- Tested and certified by RWTÜV Germany





BATHROOM EQUIPMENT

An elegant range dedicated to please to your guest and
to cut the maintenance for your employees



Pedal bin

KITCHEN AND MEETING ROOMS



Elipsa
Ref. 23080605



Dustmedia
Ref. 23080505



Dustmini
Ref. 23080305
* not fingerprint-proof



Soft Close and fingerprint-proof*

- Ascolia Pedal bin 3L, 5L, 6L and 12L
- Lid & body: brushed stainless steel
- Removable plastic inner bucket
- Easy to clean
- Robust pedal mechanism



Dustgiga
Ref. 23081205

Weighing scale



Pharo 200 (63746)

Ref. 23033402



Tefal Classic (PP1100)

Ref. 23032902

Solar Technology

- Four high precision strain gauge sensor system
- Auto zero and auto-off
- Maximum weight capacity 160 kg
- Division 100 g
- Tempered safety glass
- Anti slippery pad included
- Kilos / LB
- Large LCD screen



Solar Sense (63308)

No batteries needed !

Ref. 23033204

Valera Hair-dryers



Action 1800 Push

Ref. 23021804

- Long-life AC motor
- Security On/Off push button
- 6 air flow/temperature combinations
- Removable metallic air filter
- Spiral cable
- CE / DVE / GS
- 2000W



Excell 1800

Ref. 23021802

- Security On/Off push button
- 6 air flow/temperature combinations
- Cool hair setting
- Spiral cable
- CE / DVE / GS
- 1800W



Also available in 2000w ionic

Metal Master 2000

Ref. 23022007

- Long-life AC motor
- Security On/Off push button
- 6 air flow/temperature combinations
- Removable metallic air filter
- Spiral cable
- CE / DVE / GS

Ionic Tourmaline Light



Swiss Nano 9000 Push

Ref. 23022004

- Air flow control switch: 2 settings
- Air temperature control switch : 3 settings
- 6 air flow/temperature combinations
- COOL air setting
- Removable air filter
- Wall-holder in option
- 1800W



Option : Alternative 1600w and 1800w available

- New Design, modern and stylish
- Double insulation
- Nano-silver antibactaria coating
- Power and comfort
- 3 temperatures settings
- 2 speeds
- Quiet operation
- 2-year warranty
- Two switches :
 - An isolating switch on the wall holder
 - A safety return switch on the "pistol"



Premium 1200 Super

Ref. 23040303



Action Super Plus 1200 Black

Ref. 23040504



Action Super Plus 1200 White

Ref. 23040503



Premium Smart 1600 Shaver

Ref. 23040603



Action Super Plus 1600 Shaver

Ref. 23040703



Excel 1600 Shaver Silver

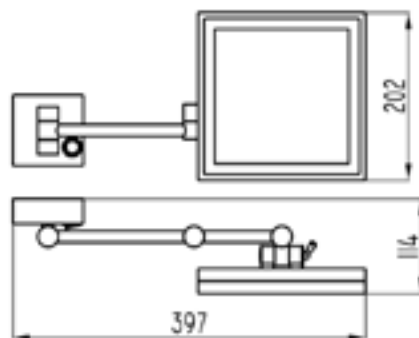
Ref. 23040602

Bathroom Accessories

Mira

Ref. 23011407

- Contemporary squared mirror
- Brass chrome finishing
- 3x Magnification
- Full pivotal adjustment
- Double arm
- Dim. 203x203 mm



Modernity & Infinity LED Mirrors - 50 000 hours lightning

Prisma

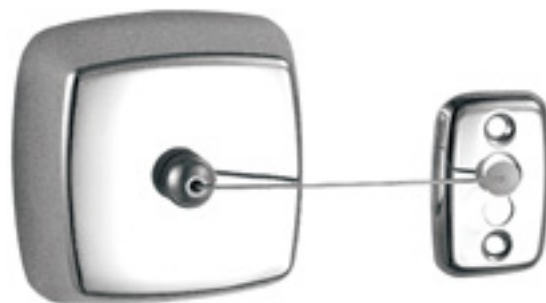
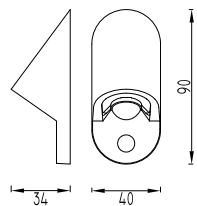
Ref. 23012507

- 3X Magnification - LED
- Full pivotal adjustment
- Double jointed arm
- 100 / 240 V
- 2-Year Warranty

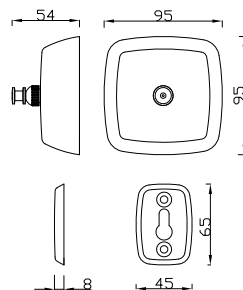




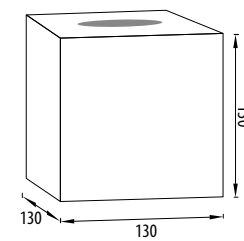
Opina
Ref. 23059007
Brass Chrome Finishing



Linea
Ref. 23059507
Brass Chrome Finishing



Cubina
Ref. 23051307
ABS Chrome Finishing

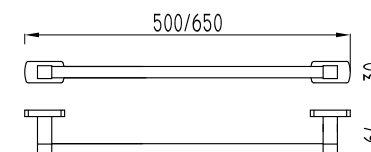




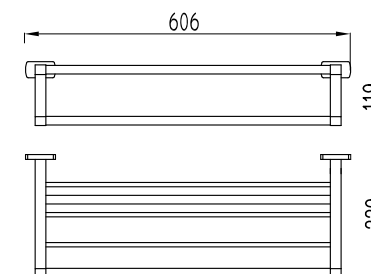
Bathroom Accessories

Elegance Line, the Sense of
Finesse & Perfection by Ascolia

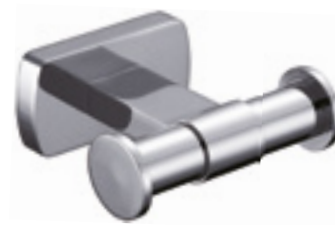
Barina
Ref. 23066607



Shelvina
Ref. 23066007



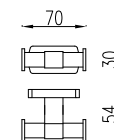
Bathroom Accessories



Duokina

Ref. 23060707

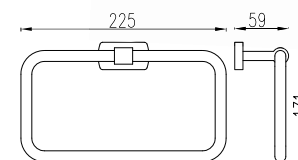
Brass Chrome Finishing



Ringina

Ref. 23062307

Brass Chrome Finishing

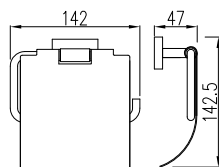




Corolina

Ref. 23061407

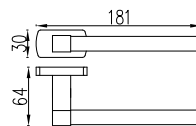
Brass Chrome Finishing



Rolina

Ref. 23061807

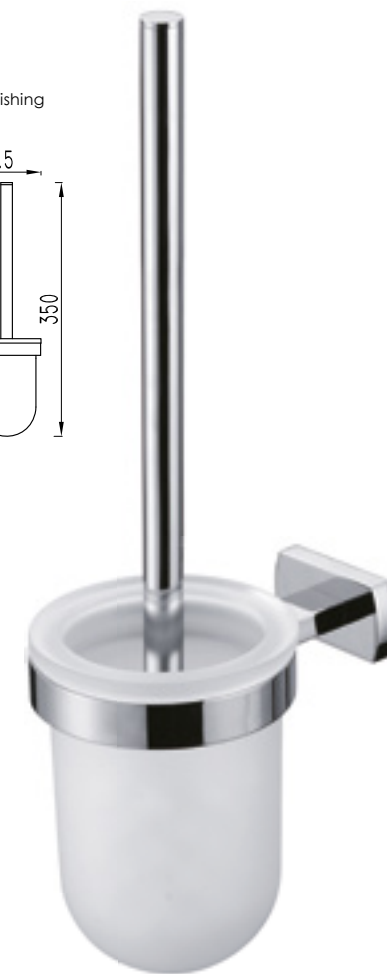
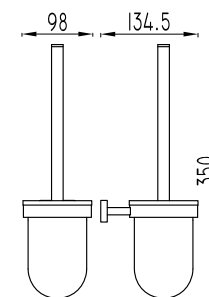
Brass Chrome Finishing



Clinea

Ref. 23061307

Brass Chrome Finishing







The specifications and appearance of our products can change at any time without prior notice. The models featured in this catalogue are intended as illustrations and do not represent a contractual description of our products.

The Ascolia brand and our products are protected by copyright. For further information, please contact your Ascolia distributor.



Head office

ASCOLIA

Bergensesteenweg, 308
B-1600 Sint Pieters Leeuw
Belgium
Tel +32 2 378 21 31

France

ARIANEL

15, rue Jean Zay
F-69800 Saint Priest
France
Tel +33 4 72 28 40 30

Spain

TRM

Calle Narvaez, 35
28009 Madrid
Espana
Tel +34 639 122 765